

For Research Use Only

PROX1 Monoclonal antibody, PBS Only

Catalog Number: 67438-1-PBS



Basic Information

Catalog Number: 67438-1-PBS	GenBank Accession Number: BC024201	Purification Method: Protein A purification
Size: 100ug , Concentration: 1mg/ml by Nanodrop;	GeneID (NCBI): 5629	CloneNo.: 1D4B1
Source: Mouse	UNIPROT ID: Q92786	
Isotype: IgG2b	Full Name: prospero homeobox 1	
Immunogen Catalog Number: AG9681	Calculated MW: 737 aa, 83 kDa	
	Observed MW: 90 kDa	

Applications

Tested Applications:
WB, IHC, IF/ICC, Indirect ELISA

Species Specificity:
human, rat

Background Information

PROX1, Prospero homeobox protein 1, belongs to the Prospero homeobox family and contain a Prospero-type homeobox DNA-binding domain. PROX1 plays a fundamental role in early development of CNS and regulates the expression of gene and development of postmitotic, undifferentiated neurons. Also, PROX1 is a required regulator of the development of the lymphatic system. This antibody is raised against part of C-terminal chain of human PROX1. The calculated molecular weight of PROX1 is 83 kDa, but with post-translational modifications, PROX1 is about 90 kDa.

Storage

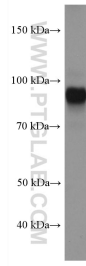
Storage:
Store at -80°C.

Storage Buffer:
PBS only, pH7.3

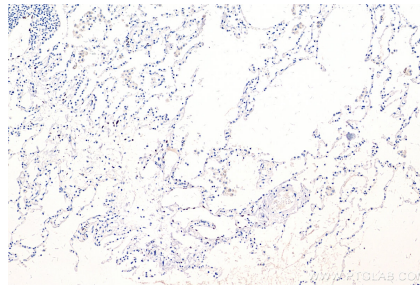
For technical support and original validation data for this product please contact:
T: 1 (888) 4PTGLAB (1-888-478-4522) (toll free in USA), or 1(312) 455-8498 (outside USA)
E: proteintech@ptglab.com
W: ptglab.com

This product is exclusively available under Proteintech Group brand and is not available to purchase from any other manufacturer.

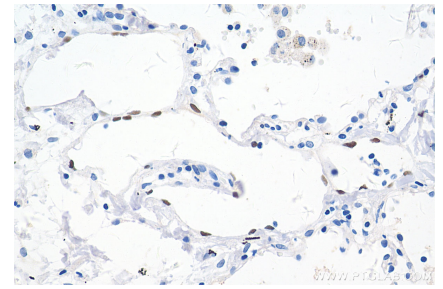
Selected Validation Data



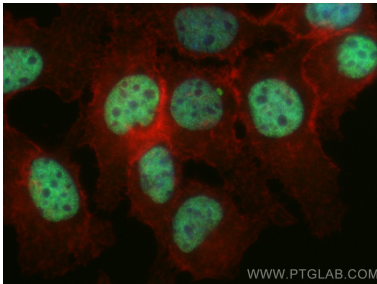
HuH-7 cells were subjected to SDS PAGE followed by western blot with 67438-1-Ig (PROX1 antibody) at dilution of 1:3000 incubated at room temperature for 1.5 hours. This data was developed using the same antibody clone with 67438-1-PBS in a different storage buffer formulation.



Immunohistochemical analysis of paraffin-embedded human lung cancer tissue slide using 67438-1-Ig (PROX1 antibody) at dilution of 1:4000 (under 10x lens). Heat mediated antigen retrieval with Tris-EDTA buffer (pH 9.0). This data was developed using the same antibody clone with 67438-1-PBS in a different storage buffer formulation.



Immunohistochemical analysis of paraffin-embedded human lung cancer tissue slide using 67438-1-Ig (PROX1 antibody) at dilution of 1:4000 (under 40x lens). Heat mediated antigen retrieval with Tris-EDTA buffer (pH 9.0). This data was developed using the same antibody clone with 67438-1-PBS in a different storage buffer formulation.



Immunofluorescent analysis of (4% PFA) fixed HuH-7 cells using PROX1 antibody (67438-1-Ig, Clone: 1D4B1) at dilution of 1:800 and CoraLite®488-Conjugated Goat Anti-Mouse IgG(H+L) (SA00013-1), CL594-Phalloidin (red). This data was developed using the same antibody clone with 67438-1-PBS in a different storage buffer formulation.