

For Research Use Only

# PPM1D Monoclonal antibody

Catalog Number: 67440-1-Ig



## Basic Information

<b>Catalog Number:</b> 67440-1-Ig	<b>GenBank Accession Number:</b> BC060877	<b>Purification Method:</b> Protein G purification
<b>Size:</b> 150ul , Concentration: 2000 µg/ml by Nanodrop and 1000 µg/ml by Bradford method using BSA as the standard;	<b>GeneID (NCBI):</b> 8493	<b>CloneNo.:</b> 2D6D5
<b>Source:</b> Mouse	<b>Full Name:</b> protein phosphatase 1D magnesium- dependent, delta isoform	<b>Recommended Dilutions:</b> WB 1:2000-1:10000 IHC 1:50-1:500 IF 1:50-1:500
<b>Isotype:</b> IgG1	<b>Observed MW:</b> 67 kDa, 47 kDa	
<b>Immunogen Catalog Number:</b> AG24761		

## Applications

### Tested Applications:

IF, IHC, WB, ELISA

### Species Specificity:

Human, Mouse, Rat, Pig

**Note-IHC: suggested antigen retrieval with  
TE buffer pH 9.0; (\*) Alternatively, antigen  
retrieval may be performed with citrate  
buffer pH 6.0**

### Positive Controls:

**WB:** MCF-7 cells, HEK-293 cells, U2OS cells, pig brain  
tissue, rat brain tissue, mouse brain tissue

**IHC:** human colon cancer tissue,

**IF:** HepG2 cells,

## Background Information

PPM1D (also known as PP2Cd and WIP1) is a member of the PPM family, which is characterized by Mg<sup>2+</sup>/Mn<sup>2+</sup>-dependent activity and relative insensitivity to okadaic acid. The PPM1D gene is aberrantly amplified in a range of common cancers and encodes a protein phosphatase that is a potential therapeutic target (PMID: 17700519). This antibody can be detected two bands of 47 and 67 Kda.

## Storage

### Storage:

Store at -20°C. Stable for one year after shipment.

### Storage Buffer:

PBS with 0.02% sodium azide and 50% glycerol pH 7.3.

Aliquoting is unnecessary for -20°C storage

**\*\*\* 20ul sizes contain 0.1% BSA**

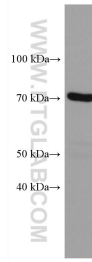
For technical support and original validation data for this product please contact:

T: 1 (888) 4PTGLAB (1-888-478-4522) (toll free  
in USA), or 1(312) 455-8498 (outside USA)

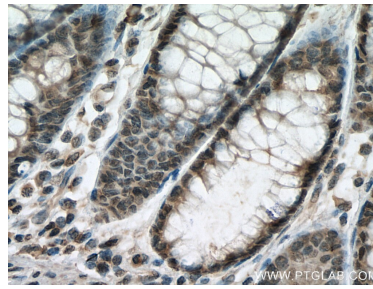
E: proteintech@ptglab.com  
W: ptglab.com

**This product is exclusively available under Proteintech  
Group brand and is not available to purchase from any  
other manufacturer.**

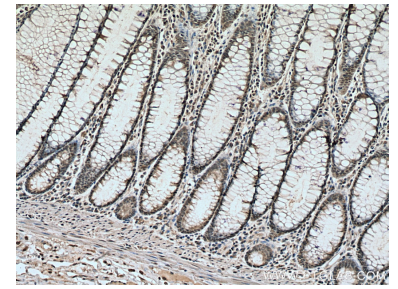
## Selected Validation Data



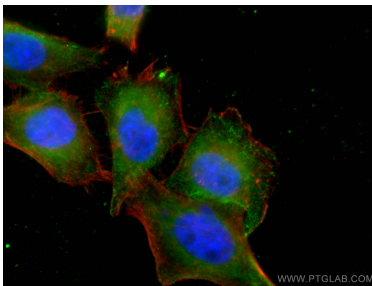
MCF-7 cells were subjected to SDS PAGE followed by western blot with 67440-1-Ig (PPM1D antibody) at dilution of 1:5000 incubated at room temperature for 1.5 hours.



Immunohistochemical analysis of paraffin-embedded human colon cancer tissue slide using 67440-1-Ig (PPM1D antibody) at dilution of 1:200 (under 40x lens). Heat mediated antigen retrieval with Tris-EDTA buffer (pH 9.0).



Immunohistochemical analysis of paraffin-embedded human colon cancer tissue slide using 67440-1-Ig (PPM1D antibody) at dilution of 1:200 (under 10x lens). Heat mediated antigen retrieval with Tris-EDTA buffer (pH 9.0).



Immunofluorescent analysis of (4% PFA) fixed HepG2 cells using 67440-1-Ig (PPM1D antibody), at dilution of 1:200 and CoralLite@488-Conjugated AffiniPure Goat Anti-Mouse IgG(H+L).