

For Research Use Only

MESDC2 Monoclonal antibody

Catalog Number: 67441-1-Ig



Basic Information

Catalog Number: 67441-1-Ig	GenBank Accession Number: BC009210	Purification Method: Protein A purification
Size: 150ul , Concentration: 1800 ug/ml by Nanodrop and 1000 ug/ml by Bradford method using BSA as the standard;	GeneID (NCBI): 23184	CloneNo.: 1A2E7
Source: Mouse	UNIPROT ID: Q14696	Recommended Dilutions: WB 1:1000-1:4000 IHC 1:1000-1:4000 IF/ICC 1:200-1:800
Isotype: IgG2a	Full Name: mesoderm development candidate 2	
Immunogen Catalog Number: AG1403	Calculated MW: 26 kDa	
	Observed MW: 26 kDa	

Applications

Tested Applications:
WB, IHC, IF/ICC, ELISA

Species Specificity:
Human

Note-IHC: suggested antigen retrieval with **TE buffer pH 9.0; (*)** Alternatively, antigen retrieval may be performed with **citrate buffer pH 6.0**

Positive Controls:

WB : JAR cells, human placenta tissue, HeLa cells, A549 cells, Jurkat cells

IHC : human placenta tissue,

IF/ICC : HEK-293 cells,

Storage

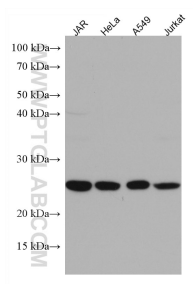
Storage:
Store at -20°C. Stable for one year after shipment.
Storage Buffer:
PBS with 0.02% sodium azide and 50% glycerol pH 7.3.
Aliquoting is unnecessary for -20°C storage

*** 20ul sizes contain 0.1% BSA

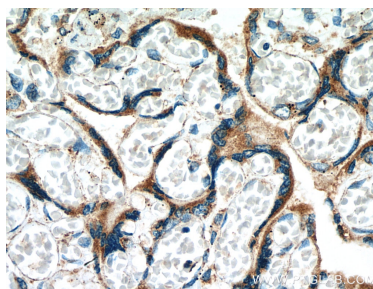
For technical support and original validation data for this product please contact:
T: 1 (888) 4PTGLAB (1-888-478-4522) (toll free in USA), or 1(312) 455-8498 (outside USA)
E: proteintech@ptglab.com
W: ptglab.com

This product is exclusively available under Proteintech Group brand and is not available to purchase from any other manufacturer.

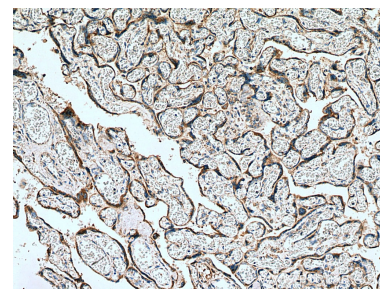
Selected Validation Data



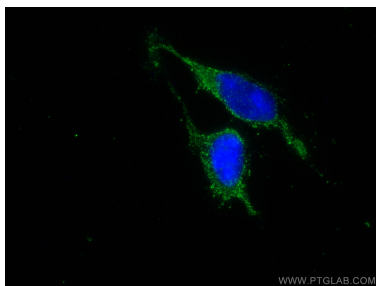
Various lysates were subjected to SDS PAGE followed by western blot with 67441-1-Ig (MESDC2 antibody) at dilution of 1:2000 incubated at room temperature for 1.5 hours.



Immunohistochemical analysis of paraffin-embedded human placenta tissue slide using 67441-1-Ig (MESDC2 antibody) at dilution of 1:2000 (under 40x lens). Heat mediated antigen retrieval with Tris-EDTA buffer (pH 9.0).



Immunohistochemical analysis of paraffin-embedded human placenta tissue slide using 67441-1-Ig (MESDC2 antibody) at dilution of 1:2000 (under 10x lens). Heat mediated antigen retrieval with Tris-EDTA buffer (pH 9.0).



Immunofluorescent analysis of (-20°C Ethanol) fixed HEK-293 cells using MESDC2 antibody (67441-1-Ig, Clone: 1A2E7) at dilution of 1:400 and CoraLite®488-Conjugated Goat Anti-Mouse IgG(H+L).