

For Research Use Only

OMA1 Monoclonal antibody

Catalog Number: 67449-1-Ig **1 Publications**



Basic Information

Catalog Number: 67449-1-Ig	GenBank Accession Number: BC012915	Purification Method: Protein G purification
Size: 150ul , Concentration: 1900 ug/ml by Nanodrop and 1000 ug/ml by Bradford method using BSA as the standard;	GeneID (NCBI): 115209	CloneNo.: 1H4D12
Source: Mouse	UNIPROT ID: Q96E52	Recommended Dilutions: WB 1:1000-1:5000
Isotype: IgG1	Full Name: OMA1 homolog, zinc metallopeptidase (S. cerevisiae)	
Immunogen Catalog Number: AG11201	Calculated MW: 524 aa, 60 kDa	
	Observed MW: 60 kDa	

Applications

Tested Applications: WB, ELISA	Positive Controls: WB : NIH/3T3 cells, HeLa cells, Jurkat cells, LNCaP cells, HEK-293 cells
Cited Applications: WB	
Species Specificity: Human, Mouse	
Cited Species: human	

Background Information

OMA1(Overlapping with the m-AAA protease 1 homolog) is also named as MPRP1(Metalloprotease-related protein 1) and belongs to the peptidase M48 family.It is a zinc metalloprotease that spans the inner mitochondrial membrane with a number of predicted membrane spanning domains and the 60 kDa form of OMA1 rapidly accumulated concomitantly with the cleavage of all OPA1 variants,and the 40 kDa form of OMA1 may be the inactive form, with the 60 kDa form being the active enzyme(PMID:20334834)

Notable Publications

Author	Pubmed ID	Journal	Application
Magda Krakowczyk	39488374	Methods Enzymol	WB

Storage

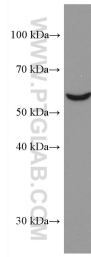
Storage:
Store at -20°C.
Storage Buffer:
PBS with 0.02% sodium azide and 50% glycerol pH 7.3.
Aliquoting is unnecessary for -20°C storage

*** 20ul sizes contain 0.1% BSA

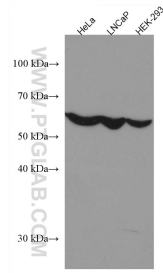
For technical support and original validation data for this product please contact:
T: 1 (888) 4PTGLAB (1-888-478-4522) (toll free in USA), or 1(312) 455-8498 (outside USA)
E: proteintech@ptglab.com
W: ptglab.com

This product is exclusively available under Proteintech Group brand and is not available to purchase from any other manufacturer.

Selected Validation Data



NIH/3T3 cells were subjected to SDS PAGE followed by western blot with 67449-1-Ig (OMA1 antibody) at dilution of 1:3000 incubated at room temperature for 1.5 hours.



Various lysates were subjected to SDS PAGE followed by western blot with 67449-1-Ig (OMA1 antibody) at dilution of 1:3000 incubated at room temperature for 1.5 hours.