

For Research Use Only

ALDOA Monoclonal antibody

Catalog Number: 67453-1-Ig **4 Publications**



Basic Information

Catalog Number: 67453-1-Ig	GenBank Accession Number: BC016800	Purification Method: Protein A purification
Size: 150ul , Concentration: 900 ug/ml by Nanodrop and 500 ug/ml by Bradford method using BSA as the standard;	GeneID (NCBI): 226	CloneNo.: 1D6C2
Source: Mouse	UNIPROT ID: P04075	Recommended Dilutions: WB 1:5000-1:50000 IHC 1:500-1:2000 IF/ICC 1:200-1:800
Isotype: IgG1	Full Name: aldolase A, fructose-bisphosphate	
Immunogen Catalog Number: AG17952	Calculated MW: 39 kDa	
	Observed MW: 35-40 kDa	

Applications

Tested Applications: WB, IHC, IF/ICC, ELISA	Positive Controls:
Cited Applications: WB, IHC, IF	WB : HeLa cells, HEK-293 cells, HepG2 cells, Jurkat cells, HSC-T6 cells, NIH/3T3 cells, 4T1 cells, pig liver tissue
Species Specificity: human, mouse, rat, pig	IHC : human lung cancer tissue,
Cited Species: human	IF/ICC : HeLa cells,
Note-IHC: suggested antigen retrieval with TE buffer pH 9.0; (*) Alternatively, antigen retrieval may be performed with citrate buffer pH 6.0	

Background Information

ALDOA(Fructose-bisphosphate aldolase A) is also named as lung cancer antigen NY-LU-1, muscle-type aldolase, ALDA and belongs to the class I fructose-bisphosphate aldolase family. The ALDOA gene encodes a homotetrameric protein(PMID:14615364). It is found in skeletal muscle and red blood cells, and functions in glycolysis, promoting the reversible cleavage of FBP to triose phosphate, G-3-P and DHAP. ALDOA is upregulated in various cancers, including human lung squamous and renal cell carcinomas(PMID:19937139).

Notable Publications

Author	Pubmed ID	Journal	Application
Chuhuan Zhou	39247585	J Cancer	IHC
Qinglin Wang	39058593	Cell Rep	WB, IHC, IF
Fan Kou	37794134	Oncogene	WB

Storage

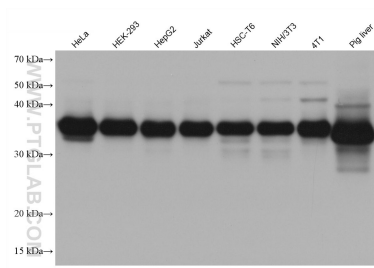
Storage:
Store at -20°C. Stable for one year after shipment.
Storage Buffer:
PBS with 0.02% sodium azide and 50% glycerol, pH7.3
Aliquoting is unnecessary for -20°C storage

*** 20ul sizes contain 0.1% BSA

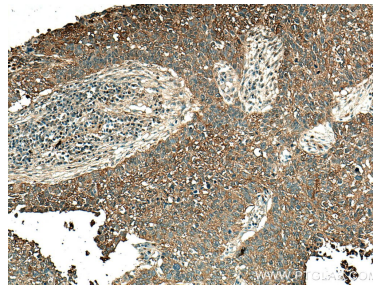
For technical support and original validation data for this product please contact:
T: 1 (888) 4PTGLAB (1-888-478-4522) (toll free in USA), or 1(312) 455-8498 (outside USA)
E: proteintech@ptglab.com
W: ptglab.com

This product is exclusively available under Proteintech Group brand and is not available to purchase from any other manufacturer.

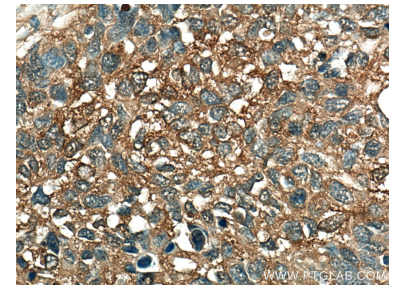
Selected Validation Data



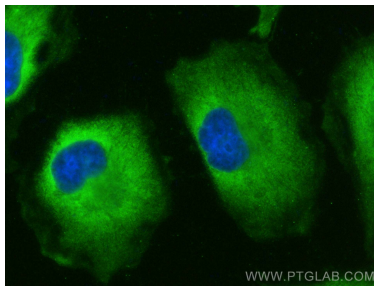
Various lysates were subjected to SDS PAGE followed by western blot with 67453-1-Ig (ALDOA antibody) at dilution of 1:20000 incubated at room temperature for 1.5 hours.



Immunohistochemical analysis of paraffin-embedded human lung cancer tissue slide using 67453-1-Ig (ALDOA antibody) at dilution of 1:1000 (under 10x lens). Heat mediated antigen retrieval with Tris-EDTA buffer (pH 9.0).



Immunohistochemical analysis of paraffin-embedded human lung cancer tissue slide using 67453-1-Ig (ALDOA antibody) at dilution of 1:1000 (under 40x lens). Heat mediated antigen retrieval with Tris-EDTA buffer (pH 9.0).



Immunofluorescent analysis of (-20°C Ethanol) fixed HeLa cells using ALDOA antibody (67453-1-Ig, Clone: 1D6C2) at dilution of 1:400 and Multi-rAb CoraLite® Plus 488-Goat Anti-Mouse Recombinant Secondary Antibody (H+L) (RGAM002).