

For Research Use Only

ME2 Monoclonal antibody

Catalog Number: 67457-1-Ig

Featured Product

1 Publications



Basic Information

Catalog Number:

67457-1-Ig

Size:

150ul, Concentration: 900 ug/ml by Nanodrop and 500 ug/ml by Bradford method using BSA as the standard;

Source:

Mouse

Isotype:

IgG2a

Immunogen Catalog Number:

AG20741

GenBank Accession Number:

BC000147

GeneID (NCBI):

4200

UNIPROT ID:

P23368

Full Name:

malic enzyme 2, NAD(+)-dependent, mitochondrial

Calculated MW:

65 kDa

Observed MW:

54 kDa, 65 kDa

Purification Method:

Protein A purification

CloneNo.:

6E6E2

Recommended Dilutions:

WB 1:1000-1:5000

IHC 1:50-1:500

Applications

Tested Applications:

WB, IHC, ELISA

Cited Applications:

IF, IHC

Species Specificity:

Human, Mouse, Rat

Cited Species:

human, mouse

Note-IHC: suggested antigen retrieval with TE buffer pH 9.0; (*) Alternatively, antigen retrieval may be performed with citrate buffer pH 6.0

Positive Controls:

WB : LNCaP cells, HeLa cells, HepG2 cells, human peripheral blood platelets, K-562 cells, HSC-T6 cells, NIH/3T3 cells

IHC : human liver cancer tissue,

Background Information

ME2(malic enzyme 2) is also named as NAD-ME and belongs to the malic enzymes family. ME1, ME2 are important for NADPH production, lipogenesis and glutamine metabolism, but ME2 has a more profound effect. ME2 is a genome-coded mitochondrial enzyme that converts malate to pyruvate and is involved in neuronal synthesis of the neurotransmitter γ -aminobutyric acid (GABA)(PMID:15532013). This protein has 2 isoforms produced by alternative splicing with the MW of 65 kDa and 54 kDa.

Notable Publications

Author	Pubmed ID	Journal	Application
Taiqi Chen	38263319	Nat Commun	IHC,IF

Storage

Storage:

Store at -20°C.

Storage Buffer:

PBS with 0.02% sodium azide and 50% glycerol pH 7.3.

Aliquoting is unnecessary for -20°C storage

*** 20ul sizes contain 0.1% BSA

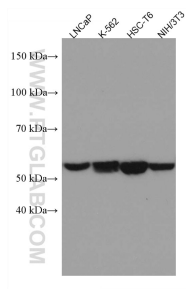
For technical support and original validation data for this product please contact:

T: 1 (888) 4PTGLAB (1-888-478-4522) (toll free in USA), or 1(312) 455-8498 (outside USA)

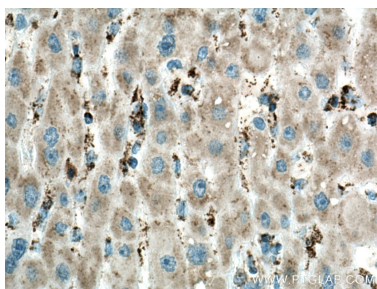
E: proteintech@ptglab.com
W: ptglab.com

This product is exclusively available under Proteintech Group brand and is not available to purchase from any other manufacturer.

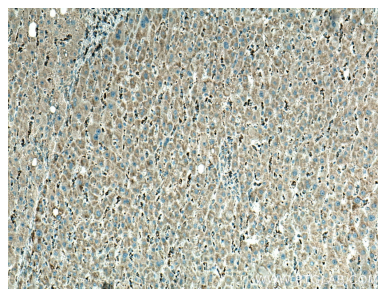
Selected Validation Data



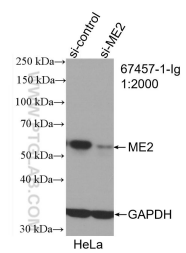
Various lysates were subjected to SDS PAGE followed by western blot with 67457-1-Ig (ME2 antibody) at dilution of 1:2500 incubated at room temperature for 1.5 hours.



Immunohistochemical analysis of paraffin-embedded human liver cancer tissue slide using 67457-1-Ig (ME2 antibody) at dilution of 1:200 (under 40x lens). Heat mediated antigen retrieval with Tris-EDTA buffer (pH 9.0).



Immunohistochemical analysis of paraffin-embedded human liver cancer tissue slide using 67457-1-Ig (ME2 antibody) at dilution of 1:200 (under 10x lens). Heat mediated antigen retrieval with Tris-EDTA buffer (pH 9.0).



WB result of ME2 antibody (67457-1-Ig; 1:2000; incubated at room temperature for 1.5 hours) with sh-Control and sh-ME2 transfected HeLa cells.