

For Research Use Only

CEP55 Monoclonal antibody, PBS Only

Catalog Number: 67460-1-PBS

Featured Product



Basic Information

Catalog Number:

67460-1-PBS

Size:

100ug, Concentration: 1mg/ml by Nanodrop;

Source:

Mouse

Isotype:

IgG1

Immunogen Catalog Number:

AG29995

GenBank Accession Number:

BC008947

GeneID (NCBI):

55165

UNIPROT ID:

Q53EZ4

Full Name:

centrosomal protein 55kDa

Calculated MW:

54 kDa

Observed MW:

47-55 kDa

Purification Method:

Protein G purification

CloneNo.:

2D11F7

Applications

Tested Applications:

WB, IHC, IF/ICC, Indirect ELISA

Species Specificity:

human, mouse

Background Information

CEP55, also named as C10orf3 and URCC6, is a 55 kDa protein which located in the centrosome in interphase cells and recruited to the midbody during cytokinesis, is essential for completion of cell abscission. It plays a role in mitotic exit and cytokinesis. CEP55 has two isoforms with the MW of 47 and 55 kDa.

Storage

Storage:

Store at -80°C.

Storage Buffer:

PBS Only

For technical support and original validation data for this product please contact:

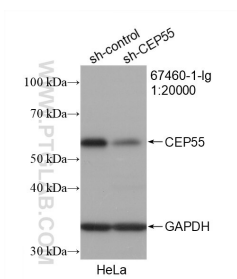
T: 1 (888) 4PTGLAB (1-888-478-4522) (toll free in USA), or 1(312) 455-8498 (outside USA)

E: proteintech@ptglab.com

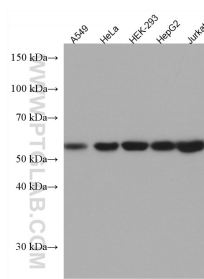
W: ptglab.com

This product is exclusively available under Proteintech Group brand and is not available to purchase from any other manufacturer.

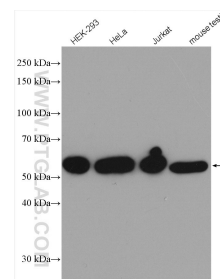
Selected Validation Data



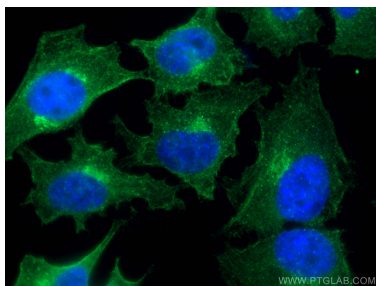
WB result of CEP55 antibody (67460-1-Ig; 1:20000; incubated at room temperature for 1.5 hours) with sh-Control and sh-CEP55 transfected HeLa cells. This data was developed using the same antibody clone with 67460-1-PBS in a different storage buffer formulation.



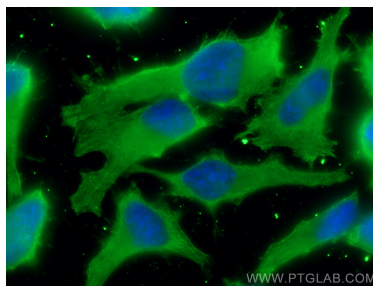
Various lysates were subjected to SDS PAGE followed by western blot with 67460-1-Ig (CEP55 antibody) at dilution of 1:15000 incubated at room temperature for 1.5 hours. This data was developed using the same antibody clone with 67460-1-PBS in a different storage buffer formulation.



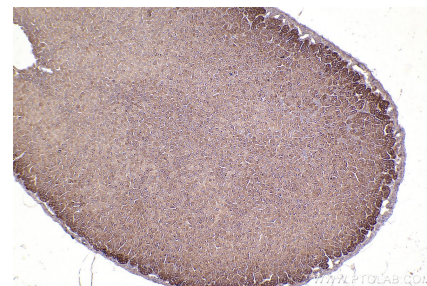
Various lysates were subjected to SDS PAGE followed by western blot with 67460-1-Ig (CEP55 antibody) at dilution of 1:15000 incubated at room temperature for 1.5 hours. This data was developed using the same antibody clone with 67460-1-PBS in a different storage buffer formulation.



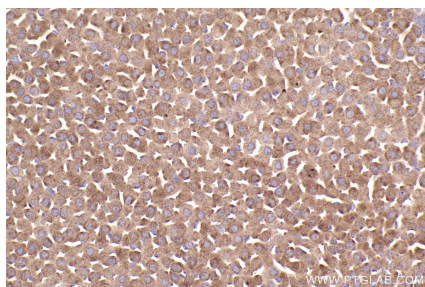
Immunofluorescent analysis of (4% PFA) fixed HeLa cells using 67460-1-Ig (CEP55 antibody), at dilution of 1:200 and CoralLite®488-Conjugated AffiniPure Goat Anti-Mouse IgG(H+L). This data was developed using the same antibody clone with 67460-1-PBS in a different storage buffer formulation.



Immunofluorescent analysis of (-20°C Ethanol) fixed HeLa cells using CEP55 antibody (67460-1-Ig, Clone: 2D11F7) at dilution of 1:800 and CoralLite®488-Conjugated AffiniPure Goat Anti-Mouse IgG(H+L). This data was developed using the same antibody clone with 67460-1-PBS in a different storage buffer formulation.



Immunohistochemical analysis of paraffin-embedded mouse adrenal gland tissue slide using 67460-1-Ig (CEP55 antibody) at dilution of 1:2000 (under 10x lens). Heat mediated antigen retrieval with Tris-EDTA buffer (pH 9.0). This data was developed using the same antibody clone with 67460-1-PBS in a different storage buffer formulation.



Immunohistochemical analysis of paraffin-embedded mouse adrenal gland tissue slide using 67460-1-Ig (CEP55 antibody) at dilution of 1:2000 (under 40x lens). Heat mediated antigen retrieval with Tris-EDTA buffer (pH 9.0). This data was developed using the same antibody clone with 67460-1-PBS in a different storage buffer formulation.