

For Research Use Only

# Arfaptin-1 Monoclonal antibody

Catalog Number: 67461-1-Ig



## Basic Information

Catalog Number:

67461-1-Ig

Size:

150ul, Concentration: 1500 ug/ml by 27236  
Nanodrop and 1000 ug/ml by Bradford  
method using BSA as the standard;

Source:

Mouse

Isotype:

IgG2a

Immunogen Catalog Number:

AG12097

GenBank Accession Number:

BC103759

GeneID (NCBI):

27236

UNIPROT ID:

P53367

Full Name:

ADP-ribosylation factor interacting  
protein 1

Calculated MW:

373 aa, 42 kDa

Observed MW:

38-42 kDa

Purification Method:

Protein A purification

CloneNo.:

2A10B3

Recommended Dilutions:

WB 1:1000-1:4000

IHC 1:200-1:800

IF-P 1:200-1:800

IF/ICC 1:200-1:800

## Applications

Tested Applications:

WB, IHC, IF/ICC, IF-P, ELISA

Species Specificity:

human, mouse, rat

**Note-IHC: suggested antigen retrieval with  
TE buffer pH 9.0; (\*) Alternatively, antigen  
retrieval may be performed with citrate  
buffer pH 6.0**

Positive Controls:

WB : HeLa cells, HSC-T6 cells, NIH/3T3 cells, 4T1 cells,  
RAW 264.7 cells, HepG2 cells, Jurkat cells

IHC : mouse kidney tissue,

IF-P : mouse kidney tissue,

IF/ICC : A549 cells,

## Storage

Storage:

Store at -20°C. Stable for one year after shipment.

Storage Buffer:

PBS with 0.02% sodium azide and 50% glycerol pH 7.3.

Aliquoting is unnecessary for -20°C storage

\*\*\* 20ul sizes contain 0.1% BSA

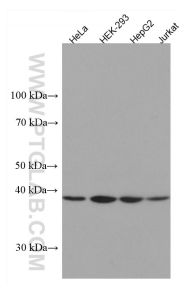
For technical support and original validation data for this product please contact:

T: 1 (888) 4PTGLAB (1-888-478-4522) (toll free  
in USA), or 1(312) 455-8498 (outside USA)

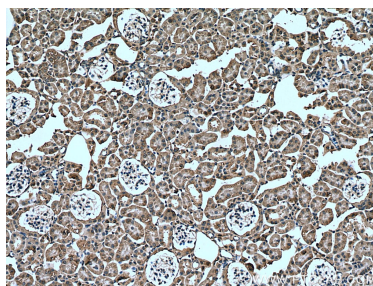
E: [proteintech@ptglab.com](mailto:proteintech@ptglab.com)  
W: [ptglab.com](http://ptglab.com)

This product is exclusively available under Proteintech  
Group brand and is not available to purchase from any  
other manufacturer.

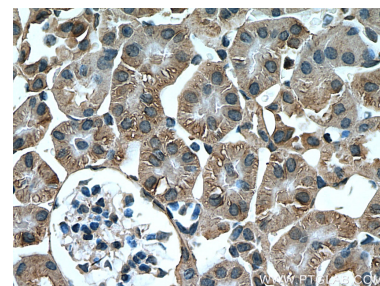
## Selected Validation Data



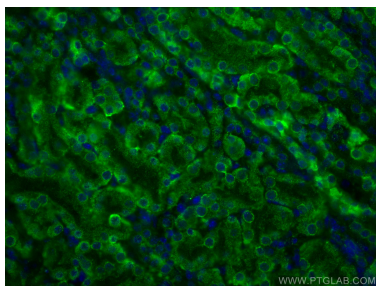
Various lysates were subjected to SDS PAGE followed by western blot with 67461-1-Ig (ARFIP1 antibody) at dilution of 1:3000 incubated at room temperature for 1.5 hours.



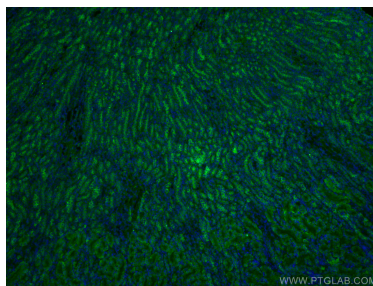
Immunohistochemical analysis of paraffin-embedded mouse kidney tissue slide using 67461-1-Ig (Arfaptin-1 antibody) at dilution of 1:400 (under 10x lens). Heat mediated antigen retrieval with Tris-EDTA buffer (pH 9.0).



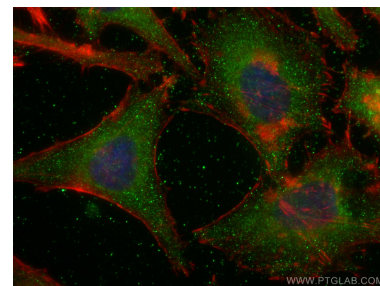
Immunohistochemical analysis of paraffin-embedded mouse kidney tissue slide using 67461-1-Ig (Arfaptin-1 antibody) at dilution of 1:400 (under 40x lens). Heat mediated antigen retrieval with Tris-EDTA buffer (pH 9.0).



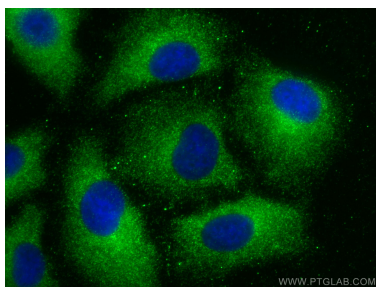
Immunofluorescent analysis of (4% PFA) fixed mouse kidney tissue using Arfaptin-1 antibody (67461-1-Ig, Clone: 2A10B3) at dilution of 1:400 and CoraLite®488-Conjugated Goat Anti-Mouse IgG(H+L).



Immunofluorescent analysis of (4% PFA) fixed mouse kidney tissue using Arfaptin-1 antibody (67461-1-Ig, Clone: 2A10B3) at dilution of 1:400 and CoraLite®488-Conjugated Goat Anti-Mouse IgG(H+L).



Immunofluorescent analysis of (-20°C Ethanol) fixed HeLa cells using Arfaptin-1 antibody (67461-1-Ig, Clone: 2A10B3) at dilution of 1:800 and CoraLite®488-Conjugated Goat Anti-Mouse IgG(H+L), CL594-Phalloidin (red).



Immunofluorescent analysis of (-20°C Methanol) fixed A549 cells using Arfaptin-1 antibody (67461-1-Ig, Clone: 2A10B3) at dilution of 1:400 and CoraLite®488-Conjugated Goat Anti-Mouse IgG(H+L).