

For Research Use Only

Arfaptin-1 Monoclonal antibody, PBS Only (Detector)

Catalog Number: 67461-1-PBS



Basic Information

Catalog Number: 67461-1-PBS	GenBank Accession Number: BC103759	Purification Method: Protein A purification
Size: 100ug , Concentration: 1mg/ml by Nanodrop;	GeneID (NCBI): 27236	CloneNo.: 2A10B3
Source: Mouse	UNIPROT ID: P53367	
Isotype: IgG2a	Full Name: ADP-ribosylation factor interacting protein 1	
Immunogen Catalog Number: AG12097	Calculated MW: 373 aa, 42 kDa	
	Observed MW: 38-42 kDa	

Applications

Tested Applications:
WB, IHC, IF/ICC, IF-P, Cytometric bead array, Indirect ELISA

Species Specificity:
human, mouse, rat

Product Information

67461-1-PBS targets Arfaptin-1 as part of a matched antibody pair:

MP51228-2: 67461-3-PBS capture and 67461-1-PBS detection (validated in Cytometric bead array)

Unconjugated mouse monoclonal antibody pair in PBS only (BSA and azide free) storage buffer at a concentration of 1 mg/mL, ready for conjugation.

This conjugation ready format makes antibodies ideal for use in many applications including: ELISAs, multiplex assays requiring matched pairs, mass cytometry, and multiplex imaging applications. Antibody use should be optimized by the end user for each application and assay.

Storage

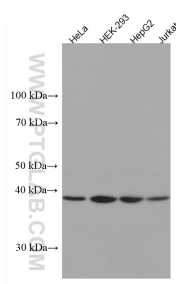
Storage:
Store at -80°C.

Storage Buffer:
PBS Only

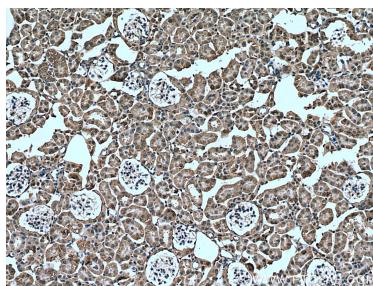
For technical support and original validation data for this product please contact:
T: 1 (888) 4PTGLAB (1-888-478-4522) (toll free in USA), or 1(312) 455-8498 (outside USA)
E: proteintech@ptglab.com
W: ptglab.com

This product is exclusively available under Proteintech Group brand and is not available to purchase from any other manufacturer.

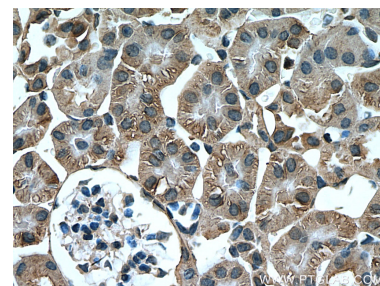
Selected Validation Data



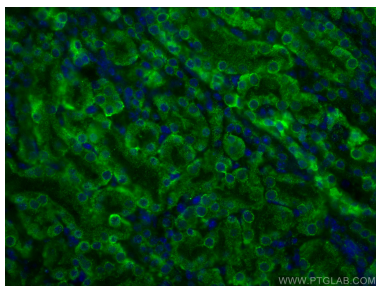
Various lysates were subjected to SDS PAGE followed by western blot with 67461-1-Ig (ARFIP1 antibody) at dilution of 1:3000 incubated at room temperature for 1.5 hours. This data was developed using the same antibody clone with 67461-1-PBS in a different storage buffer formulation.



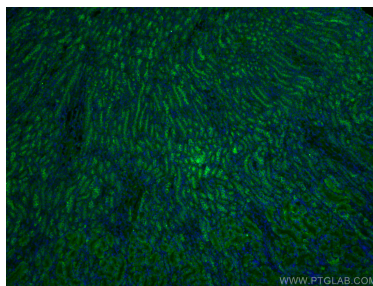
Immunohistochemical analysis of paraffin-embedded mouse kidney tissue slide using 67461-1-Ig (Arfaptin-1 antibody) at dilution of 1:400 (under 10x lens). Heat mediated antigen retrieval with Tris-EDTA buffer (pH 9.0). This data was developed using the same antibody clone with 67461-1-PBS in a different storage buffer formulation.



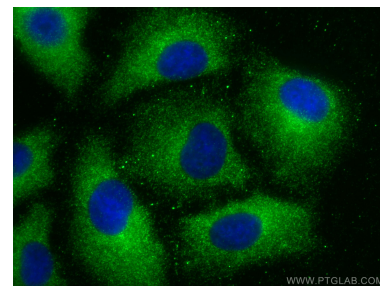
Immunohistochemical analysis of paraffin-embedded mouse kidney tissue slide using 67461-1-Ig (Arfaptin-1 antibody) at dilution of 1:400 (under 40x lens). Heat mediated antigen retrieval with Tris-EDTA buffer (pH 9.0). This data was developed using the same antibody clone with 67461-1-PBS in a different storage buffer formulation.



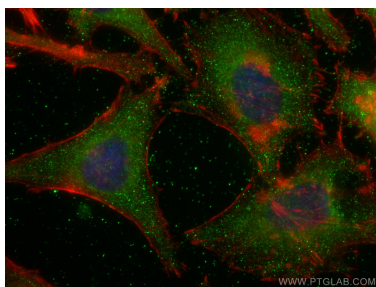
Immunofluorescent analysis of (4% PFA) fixed mouse kidney tissue using Arfaptin-1 antibody (67461-1-Ig, Clone: 2A10B3) at dilution of 1:400 and CoraLite®488-Conjugated AffiniPure Goat Anti-Mouse IgG(H+L). This data was developed using the same antibody clone with 67461-1-PBS in a different storage buffer formulation.



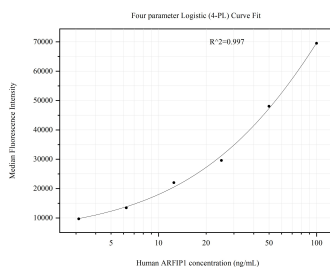
Immunofluorescent analysis of (4% PFA) fixed mouse kidney tissue using Arfaptin-1 antibody (67461-1-Ig, Clone: 2A10B3) at dilution of 1:400 and CoraLite®488-Conjugated AffiniPure Goat Anti-Mouse IgG(H+L). This data was developed using the same antibody clone with 67461-1-PBS in a different storage buffer formulation.



Immunofluorescent analysis of (-20°C Methanol) fixed A549 cells using Arfaptin-1 antibody (67461-1-Ig, Clone: 2A10B3) at dilution of 1:400 and CoraLite®488-Conjugated AffiniPure Goat Anti-Mouse IgG(H+L). This data was developed using the same antibody clone with 67461-1-PBS in a different storage buffer formulation.



Immunofluorescent analysis of (-20°C Ethanol) fixed HeLa cells using Arfaptin-1 antibody (67461-1-Ig, Clone: 2A10B3) at dilution of 1:800 and CoraLite®488-Conjugated AffiniPure Goat Anti-Mouse IgG(H+L), CL594-Phalloidin (red). This data was developed using the same antibody clone with 67461-1-PBS in a different storage buffer formulation.



Cytometric bead array standard curve of MP51228-2, Arfaptin-1 Monoclonal Matched Antibody Pair, PBS Only. Capture antibody: 67461-3-PBS. Detection antibody: 67461-1-PBS. Standard: Ag12097. Range: 3.125-100 ng/mL.