

For Research Use Only

# C20orf3/APMAP Monoclonal antibody



Catalog Number: 67464-1-Ig

Featured Product

## Basic Information

<b>Catalog Number:</b> 67464-1-Ig	<b>GenBank Accession Number:</b> BC003501	<b>Purification Method:</b> Protein G purification
<b>Size:</b> 150ul , Concentration: 1600 µg/ml by Nanodrop and 1000 µg/ml by Bradford method using BSA as the standard;	<b>GeneID (NCBI):</b> 57136	<b>CloneNo.:</b> 1C6C2
<b>Source:</b> Mouse	<b>Full Name:</b> chromosome 20 open reading frame 3	<b>Recommended Dilutions:</b> WB 1:5000-1:50000
<b>Isotype:</b> IgG1	<b>Calculated MW:</b> 416 aa, 46 kDa	
<b>Immunogen Catalog Number:</b> AG29996	<b>Observed MW:</b> 42-46 kDa	

## Applications

**Tested Applications:**  
WB, ELISA

**Species Specificity:**  
Human, Mouse, Rat, Rabbit

**Positive Controls:**  
WB : Jurkat cells, HSC-T6 cells, rabbit liver tissue, HepG2 cells, LNCaP cells, NIH/3T3 cells, human placenta tissue, mouse liver tissue, rat liver tissue

## Background Information

### Storage

**Storage:**  
Store at -20°C. Stable for one year after shipment.

**Storage Buffer:**  
PBS with 0.02% sodium azide and 50% glycerol pH 7.3.

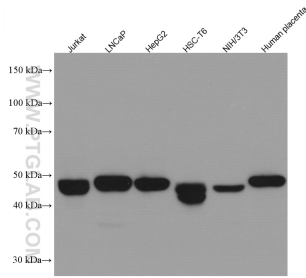
Aliquoting is unnecessary for -20°C storage

\*\*\* 20ul sizes contain 0.1% BSA

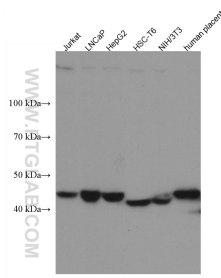
For technical support and original validation data for this product please contact:  
T: 1 (888) 4PTGLAB (1-888-478-4522) (toll free in USA), or 1(312) 455-8498 (outside USA) E: proteintech@ptglab.com W: ptglab.com

This product is exclusively available under Proteintech Group brand and is not available to purchase from any other manufacturer.

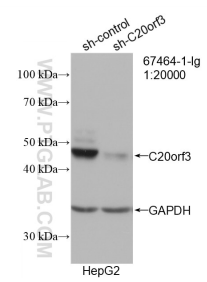
## Selected Validation Data



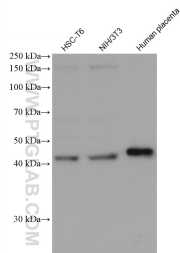
Various lysates were subjected to SDS PAGE followed by western blot with 67464-1-Ig (C20orf3/APMAP antibody) at dilution of 1:50000 incubated at room temperature for 1.5 hours.



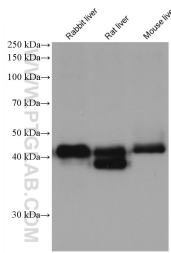
Various lysates were subjected to SDS PAGE followed by western blot with 67464-1-Ig (C20orf3/APMAP antibody) at dilution of 1:20000 incubated at room temperature for 1.5 hours.



WB result of C20orf3/APMAP antibody (67464-1-Ig; 1:20000; incubated at room temperature for 1.5 hours) with sh-Control and sh-C20orf3/APMAP transfected HepG2 cells.



Various lysates were subjected to SDS PAGE followed by western blot with 67464-1-Ig (C20orf3/APMAP antibody) at dilution of 1:50000 incubated at room temperature for 1.5 hours.



Various lysates were subjected to SDS PAGE followed by western blot with 67464-1-Ig (C20orf3/APMAP antibody) at dilution of 1:50000 incubated at room temperature for 1.5 hours.