

For Research Use Only

C20orf3/APMAP Monoclonal antibody, PBS Only

Catalog Number: 67464-1-PBS

Featured Product



Basic Information

Catalog Number:

67464-1-PBS

Size:

100ug , Concentration: 1mg/ml by
Nanodrop;

Source:

Mouse

Isotype:

IgG1

Immunogen Catalog Number:

AG29996

GenBank Accession Number:

BC003501

GeneID (NCBI):

57136

UNIPROT ID:

Q9HDC9

Full Name:

chromosome 20 open reading frame 3

Calculated MW:

416 aa, 46 kDa

Observed MW:

42-46 kDa

Purification Method:

Protein G purification

CloneNo.:

1C6C2

Applications

Tested Applications:

WB, IHC, Indirect ELISA

Species Specificity:

human, mouse, rat, rabbit

Storage

Storage:

Store at -80°C.

Storage Buffer:

PBS Only

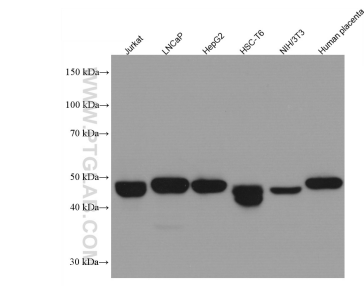
For technical support and original validation data for this product please contact:

T: 1 (888) 4PTGLAB (1-888-478-4522) (toll free
in USA), or 1(312) 455-8498 (outside USA)

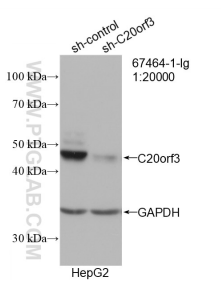
E: proteintech@ptglab.com
W: ptglab.com

This product is exclusively available under Proteintech Group brand and is not available to purchase from any other manufacturer.

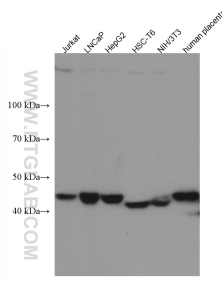
Selected Validation Data



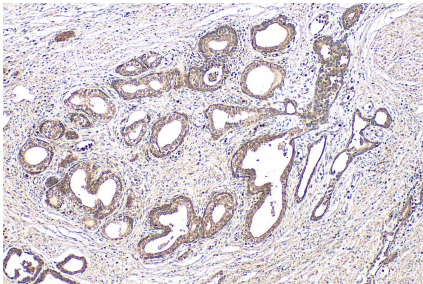
Various lysates were subjected to SDS PAGE followed by western blot with 67464-1-Ig (C20orf3/APMAP antibody) at dilution of 1:50000 incubated at room temperature for 1.5 hours. This data was developed using the same antibody clone with 67464-1-PBS in a different storage buffer formulation.



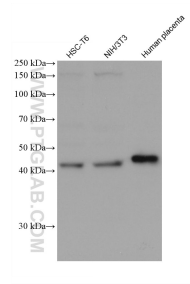
WB result of C20orf3/APMAP antibody (67464-1-Ig; 1:20000; incubated at room temperature for 1.5 hours) with sh-Control and sh-C20orf3/APMAP transfected HepG2 cells. This data was developed using the same antibody clone with 67464-1-PBS in a different storage buffer formulation.



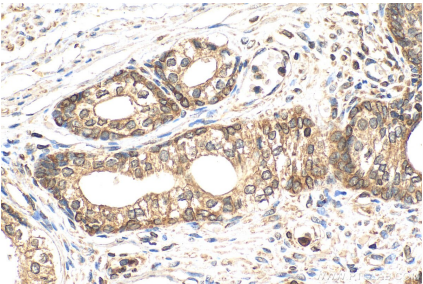
Various lysates were subjected to SDS PAGE followed by western blot with 67464-1-Ig (C20orf3/APMAP antibody) at dilution of 1:20000 incubated at room temperature for 1.5 hours. This data was developed using the same antibody clone with 67464-1-PBS in a different storage buffer formulation.



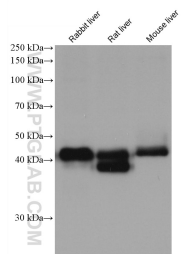
Immunohistochemical analysis of paraffin-embedded human prostate cancer tissue slide using 67464-1-Ig (C20orf3/APMAP antibody) at dilution of 1:1000 (under 10x lens). Heat mediated antigen retrieval with Tris-EDTA buffer (pH 9.0). This data was developed using the same antibody clone with 67464-1-PBS in a different storage buffer formulation.



Various lysates were subjected to SDS PAGE followed by western blot with 67464-1-Ig (C20orf3/APMAP antibody) at dilution of 1:50000 incubated at room temperature for 1.5 hours. This data was developed using the same antibody clone with 67464-1-PBS in a different storage buffer formulation.



Immunohistochemical analysis of paraffin-embedded human prostate cancer tissue slide using 67464-1-Ig (C20orf3/APMAP antibody) at dilution of 1:1000 (under 40x lens). Heat mediated antigen retrieval with Tris-EDTA buffer (pH 9.0). This data was developed using the same antibody clone with 67464-1-PBS in a different storage buffer formulation.



Various lysates were subjected to SDS PAGE followed by western blot with 67464-1-Ig (C20orf3/APMAP antibody) at dilution of 1:50000 incubated at room temperature for 1.5 hours. This data was developed using the same antibody clone with 67464-1-PBS in a different storage buffer formulation.