

For Research Use Only

MGME1 Monoclonal antibody

Catalog Number: 67468-1-Ig

Featured Product

1 Publications



Basic Information

Catalog Number:

67468-1-Ig

Size:

150ul, Concentration: 2100 ug/ml by Nanodrop and 1000 ug/ml by Bradford method using BSA as the standard;

Source:

Mouse

Isotype:

IgG1

Immunogen Catalog Number:

AG19644

GenBank Accession Number:

BC016869

GeneID (NCBI):

92667

UNIPROT ID:

Q9BQP7

Full Name:

chromosome 20 open reading frame 72

Calculated MW:

344 aa, 39 kDa

Observed MW:

36-39 kDa

Purification Method:

Protein A purification

CloneNo.:

2C4G1

Recommended Dilutions:

WB 1:2000-1:10000

IHC 1:150-1:600

Applications

Tested Applications:

WB, IHC, ELISA

Cited Applications:

WB

Species Specificity:

Human

Cited Species:

human

Note-IHC: suggested antigen retrieval with TE buffer pH 9.0; (*) Alternatively, antigen retrieval may be performed with citrate buffer pH 6.0

Positive Controls:

WB : HeLa cells, HL-60 cells, HepG2 cells, LNCaP cells, A549 cells, Jurkat cells, K-562 cells

IHC : human lung cancer tissue, human colon cancer tissue

Notable Publications

Author	Pubmed ID	Journal	Application
Feng Xiao	37166417	Aging (Albany NY)	WB

Storage

Storage:

Store at -20°C. Stable for one year after shipment.

Storage Buffer:

PBS with 0.02% sodium azide and 50% glycerol pH 7.3.

Aliquoting is unnecessary for -20°C storage

*** 20ul sizes contain 0.1% BSA

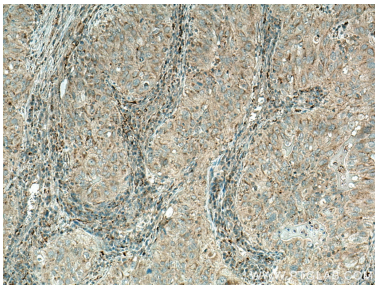
For technical support and original validation data for this product please contact:

T: 1 (888) 4PTGLAB (1-888-478-4522) (toll free in USA), or 1(312) 455-8498 (outside USA)

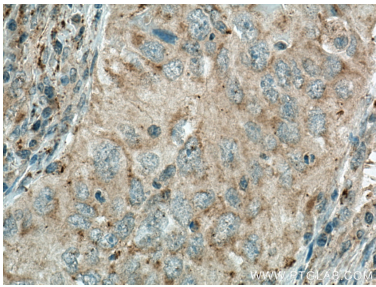
E: proteintech@ptglab.com
W: ptglab.com

This product is exclusively available under Proteintech Group brand and is not available to purchase from any other manufacturer.

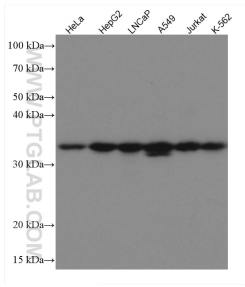
Selected Validation Data



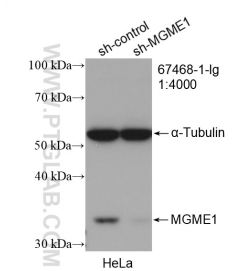
Immunohistochemical analysis of paraffin-embedded human lung cancer tissue slide using 67468-1-Ig (MGME1 antibody) at dilution of 1:300 (under 10x lens). Heat mediated antigen retrieval with Tris-EDTA buffer (pH 9.0).



Immunohistochemical analysis of paraffin-embedded human lung cancer tissue slide using 67468-1-Ig (MGME1 antibody) at dilution of 1:300 (under 40x lens). Heat mediated antigen retrieval with Tris-EDTA buffer (pH 9.0).



Various lysates were subjected to SDS PAGE followed by western blot with 67468-1-Ig (MGME1 antibody) at dilution of 1:5000 incubated at room temperature for 1.5 hours.



WB result of MGME1 antibody (67468-1-Ig; 1:4000; incubated at room temperature for 1.5 hours) with sh-Control and sh-MGME1 transfected HeLa cells.