

For Research Use Only

PLCL2 Monoclonal antibody

Catalog Number: 67471-1-Ig



Basic Information

Catalog Number: 67471-1-Ig	GenBank Accession Number: BC036392	Purification Method: Protein G purification
Size: 150ul, Concentration: 2500 ug/ml by Nanodrop and 1000 ug/ml by Bradford method using BSA as the standard;	GeneID (NCBI): 23228	CloneNo.: 1C8A4
Source: Mouse	UNIPROT ID: Q9UPRO	Recommended Dilutions: WB 1:1000-1:6000 IF/ICC 1:50-1:500
Isotype: IgG1	Full Name: phospholipase C-like 2	
Immunogen Catalog Number: AG11461	Calculated MW: 126 kDa	
	Observed MW: 126 kDa	

Applications

Tested Applications: WB, IF/ICC, ELISA	Positive Controls:
Species Specificity: human, mouse, rat, pig	WB : pig brain tissue, rat brain tissue, mouse brain tissue IF/ICC : HeLa cells,

Background Information

PLCL2, a novel phospholipase C-like protein, is expressed in lymphocytes and platelets. The expression of PLCL2 is associated with the proliferation of mature B cells in the immune system. PLCL2 is a new susceptibility loci for myocardial infarction. It has been shown that PLCL2 plays a key role in the pathogenesis of atherosclerosis and systemic sclerosis. There are three isoforms of PLCL2 protein and 67471-1-Ig antibody detects the 126 kDa band in SDS-PAGE. (PMID: 24916648, 25880423)

Storage

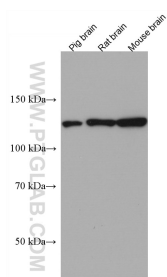
Storage:
Store at -20°C. Stable for one year after shipment.
Storage Buffer:
PBS with 0.02% sodium azide and 50% glycerol pH 7.3.
Aliquoting is unnecessary for -20°C storage

*** 20ul sizes contain 0.1% BSA

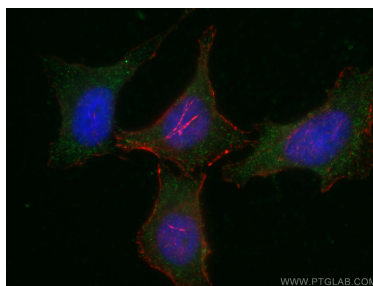
For technical support and original validation data for this product please contact:
T: 1 (888) 4PTGLAB (1-888-478-4522) (toll free in USA), or 1(312) 455-8498 (outside USA)
E: proteintech@ptglab.com
W: ptglab.com

This product is exclusively available under Proteintech Group brand and is not available to purchase from any other manufacturer.

Selected Validation Data



Various lysates were subjected to SDS PAGE followed by western blot with 67471-1-Ig (PLCL2 antibody) at dilution of 1:3000 incubated at room temperature for 1.5 hours.



Immunofluorescent analysis of (-20°C Ethanol) fixed HeLa cells using 67471-1-Ig (PLCL2 antibody), at dilution of 1:200 and CoraLite® 488-Conjugated AffiniPure Goat Anti-Mouse IgG(H+L).