

For Research Use Only

MIS12 Monoclonal antibody

Catalog Number: 67475-1-Ig



Basic Information

Catalog Number:

67475-1-Ig

Size:

150ul , Concentration: 1800 ug/ml by Nanodrop and 1000 ug/ml by Bradford method using BSA as the standard;

Source:

Mouse

Isotype:

IgG2a

Immunogen Catalog Number:

AG16826

GenBank Accession Number:

BC000229

GeneID (NCBI):

79003

UNIPROT ID:

Q9H081

Full Name:

MIS12, MIND kinetochore complex component, homolog (yeast)

Calculated MW:

205 aa, 24 kDa

Observed MW:

25 kDa

Purification Method:

Protein A purification

CloneNo.:

2G5F6

Recommended Dilutions:

WB 1:1000-1:6000

Applications

Tested Applications:

WB, ELISA

Species Specificity:

Human

Positive Controls:

WB : HeLa cells, HEK-293 cells, HepG2 cells, Jurkat cells

Storage

Storage:

Store at -20°C.

Storage Buffer:

PBS with 0.02% sodium azide and 50% glycerol pH 7.3.

Aliquoting is unnecessary for -20°C storage

*** 20ul sizes contain 0.1% BSA

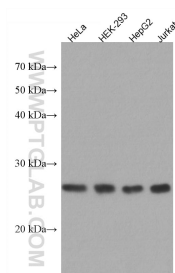
For technical support and original validation data for this product please contact:

T: 1 (888) 4PTGLAB (1-888-478-4522) (toll free in USA), or 1(312) 455-8498 (outside USA)

E: proteintech@ptglab.com
W: ptglab.com

This product is exclusively available under Proteintech Group brand and is not available to purchase from any other manufacturer.

Selected Validation Data



Various lysates were subjected to SDS PAGE followed by western blot with 67475-1-Ig (MIS12 antibody) at dilution of 1:3000 incubated at room temperature for 1.5 hours.