

For Research Use Only

# ERAP2 Monoclonal antibody, PBS Only



Catalog Number: 67477-1-PBS

## Basic Information

<b>Catalog Number:</b> 67477-1-PBS	<b>GenBank Accession Number:</b> BC065240	<b>Purification Method:</b> Protein A purification
<b>Size:</b> 100ug , Concentration: 1 mg/ml by Nanodrop;	<b>GeneID (NCBI):</b> 64167	<b>CloneNo.:</b> 2B11A2
<b>Source:</b> Mouse	<b>UNIPROT ID:</b> Q6P179	
<b>Isotype:</b> IgG2b	<b>Full Name:</b> endoplasmic reticulum aminopeptidase 2	
<b>Immunogen Catalog Number:</b> AG30061	<b>Calculated MW:</b> 110 kDa	
	<b>Observed MW:</b> 110-120 kDa	

## Applications

**Tested Applications:**  
WB, Indirect ELISA

**Species Specificity:**  
Human, Rat

## Background Information

ERAP2(Endoplasmic reticulum aminopeptidase 2) is also named as LRAP(Leukocyte-derived arginine aminopeptidase). It plays a central role in peptide trimming, a step required for the generation of most HLA class I-binding peptides. ERAP2 can form heterodimers with ERAP1(PMID:15908954). Defects in the expression of ERAP2 may cause improper antigen processing, possibly leading to favor tumor escape from the immune surveillance. ERAP2 has the calculated molecular mass of 105-110 kDa, and apparent molecular mass of 120 kDa due to the glycosylation.

## Storage

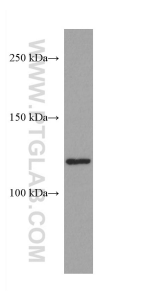
**Storage:**  
Store at -80°C.

**Storage Buffer:**  
PBS Only

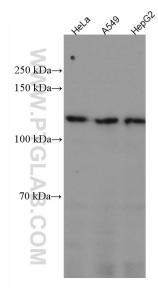
For technical support and original validation data for this product please contact:  
T: 1 (888) 4PTGLAB (1-888-478-4522) (toll free in USA), or 1(312) 455-8498 (outside USA)  
E: [proteintech@ptglab.com](mailto:proteintech@ptglab.com)  
W: [ptglab.com](http://ptglab.com)

This product is exclusively available under Proteintech Group brand and is not available to purchase from any other manufacturer.

## Selected Validation Data



A549 cells were subjected to SDS PAGE followed by western blot with 67477-1-Ig (ERAP2 antibody) at dilution of 1:3000 incubated at room temperature for 1.5 hours. This data was developed using the same antibody clone with 67477-1-PBS in a different storage buffer formulation.



Various lysates were subjected to SDS PAGE followed by western blot with 67477-1-Ig (ERAP2 antibody) at dilution of 1:2000 incubated at room temperature for 1.5 hours. This data was developed using the same antibody clone with 67477-1-PBS in a different storage buffer formulation.