

For Research Use Only

# SET Monoclonal antibody

Catalog Number: 67478-1-Ig **1 Publications**



## Basic Information

<b>Catalog Number:</b> 67478-1-Ig	<b>GenBank Accession Number:</b> NM_003011	<b>Purification Method:</b> Protein A purification
<b>Size:</b> 150ul , Concentration: 2200 ug/ml by Nanodrop and 1000 ug/ml by Bradford method using BSA as the standard;	<b>GeneID (NCBI):</b> 6418	<b>CloneNo.:</b> 2B4D1
<b>Source:</b> Mouse	<b>UNIPROT ID:</b> Q01105	<b>Recommended Dilutions:</b> WB 1:1000-1:6000
<b>Isotype:</b> IgG2b	<b>Full Name:</b> SET nuclear oncogene	
	<b>Calculated MW:</b> 33 kDa	
	<b>Observed MW:</b> 33-36 kDa	

## Applications

<b>Tested Applications:</b> WB, ELISA	<b>Positive Controls:</b> WB : Jurkat cells, 4T1 cells, HeLa cells, HepG2 cells, HSC-T6 cells
<b>Cited Applications:</b> WB	
<b>Species Specificity:</b> Human, mouse, rat	
<b>Cited Species:</b> human	

## Background Information

SET, also named as IGAAD, I-2PP2A, TAF-I, IGAAD and PHAPII, belongs to the nucleosome assembly protein (NAP) family. SET is a multifunctional oncoprotein which is ubiquitously expressed in all kinds of cells. The SET protein participates in many cellular processes including cell cycle, cell migration, apoptosis, transcription, and DNA repair. The SET protein plays important roles in facilitating cell proliferation via many pathways that promote tumorigenesis and metastasis.

## Notable Publications

Author	Pubmed ID	Journal	Application
Ling Zhang	37480565	Cell Rep	WB

## Storage

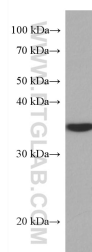
**Storage:**  
Store at -20°C.  
**Storage Buffer:**  
PBS with 0.02% sodium azide and 50% glycerol pH 7.3.  
Aliquoting is unnecessary for -20°C storage

\*\*\* 20ul sizes contain 0.1% BSA

For technical support and original validation data for this product please contact:  
T: 1 (888) 4PTGLAB (1-888-478-4522) (toll free in USA), or 1(312) 455-8498 (outside USA)  
E: [proteintech@ptglab.com](mailto:proteintech@ptglab.com)  
W: [ptglab.com](http://ptglab.com)

This product is exclusively available under Proteintech Group brand and is not available to purchase from any other manufacturer.

## Selected Validation Data



Jurkat cells were subjected to SDS PAGE followed by western blot with 67478-1-Ig (SET antibody) at dilution of 1:3000 incubated at room temperature for 1.5 hours.