

For Research Use Only

# SET Monoclonal antibody, PBS Only

Catalog Number: 67478-1-PBS



## Basic Information

<b>Catalog Number:</b> 67478-1-PBS	<b>GenBank Accession Number:</b> NM_003011	<b>Purification Method:</b> Protein A purification
<b>Size:</b> 100ug , Concentration: 1 mg/ml by Nanodrop;	<b>GeneID (NCBI):</b> 6418	<b>CloneNo.:</b> 2B4D1
<b>Source:</b> Mouse	<b>UNIPROT ID:</b> Q01105	
<b>Isotype:</b> IgG2b	<b>Full Name:</b> SET nuclear oncogene	
	<b>Calculated MW:</b> 33 kDa	
	<b>Observed MW:</b> 33-36 kDa	

## Applications

**Tested Applications:**  
WB, Indirect ELISA

**Species Specificity:**  
Human, mouse, rat

## Background Information

SET, also named as IGAAD, I-2PP2A, TAF-I, IGAAD and PHAPII, belongs to the nucleosome assembly protein (NAP) family. SET is a multifunctional oncoprotein which is ubiquitously expressed in all kinds of cells. The SET protein participates in many cellular processes including cell cycle, cell migration, apoptosis, transcription, and DNA repair. The SET protein plays important roles in facilitating cell proliferation via many pathways that promote tumorigenesis and metastasis.

## Storage

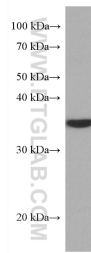
**Storage:**  
Store at -80°C.

**Storage Buffer:**  
PBS Only

For technical support and original validation data for this product please contact:  
T: 1 (888) 4PTGLAB (1-888-478-4522) (toll free in USA), or 1(312) 455-8498 (outside USA)  
E: [proteintech@ptglab.com](mailto:proteintech@ptglab.com)  
W: [ptglab.com](http://ptglab.com)

This product is exclusively available under Proteintech Group brand and is not available to purchase from any other manufacturer.

## Selected Validation Data



Jurkat cells were subjected to SDS PAGE followed by western blot with 67478-1-Ig (SET antibody) at dilution of 1:3000 incubated at room temperature for 1.5 hours. This data was developed using the same antibody clone with 67478-1-PBS in a different storage buffer formulation.