

For Research Use Only

S100P Monoclonal antibody

Catalog Number: 67485-1-Ig



Basic Information

Catalog Number: 67485-1-Ig	GenBank Accession Number: BC006819	Purification Method: Protein A purification
Size: 150ul , Concentration: 2000 µg/ml by Nanodrop and 1000 µg/ml by Bradford method using BSA as the standard;	GeneID (NCBI): 6286	CloneNo.: 1G6C3
Source: Mouse	UNIPROT ID: P25815	Recommended Dilutions: WB 1:1000-1:6000 IHC 1:4000-1:16000 IF 1:400-1:1600
Isotype: IgG2b	Full Name: S100 calcium binding protein P	
Immunogen Catalog Number: AG19115	Calculated MW: 95 aa, 11 kDa	
	Observed MW: 10 kDa	

Applications

Tested Applications:
WB, IF, IHC, ELISA

Species Specificity:
Human

Note-IHC: suggested antigen retrieval with TE buffer pH 9.0; (*) Alternatively, antigen retrieval may be performed with citrate buffer pH 6.0

Positive Controls:

WB : BXPc-3 cells,

IHC : human pancreas cancer tissue, human placenta tissue, human urothelial carcinoma tissue

IF : HeLa cells,

Background Information

S100P protein is a relatively small (95 amino acid) isoform of the S100 protein family that was first isolated from human placenta. Overexpression of S100P has been detected in several cancers such as breast, colon, prostate, pancreatic and lung carcinomas, and the protein has been functionally implicated in carcinogenic processes. S100P protein is widely expressed in both normal and neoplastic tissues. It clearly shows ectopic expression in some cancers. Based on the high expression in certain tumors, S100P could represent a potential target for novel diagnostic and therapeutic applications.

Storage

Storage:

Store at -20°C. Stable for one year after shipment.

Storage Buffer:

PBS with 0.02% sodium azide and 50% glycerol pH 7.3.

Aliquoting is unnecessary for -20°C storage

***** 20ul sizes contain 0.1% BSA**

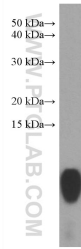
For technical support and original validation data for this product please contact:

T: 1 (888) 4PTGLAB (1-888-478-4522) (toll free in USA), or 1(312) 455-8498 (outside USA)

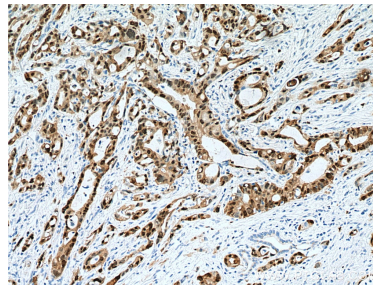
E: proteintech@ptglab.com
W: ptglab.com

This product is exclusively available under Proteintech Group brand and is not available to purchase from any other manufacturer.

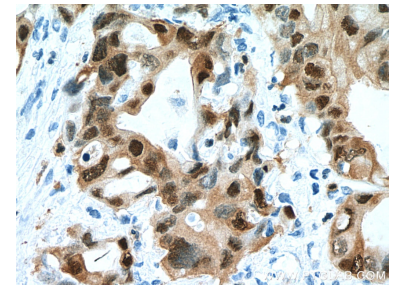
Selected Validation Data



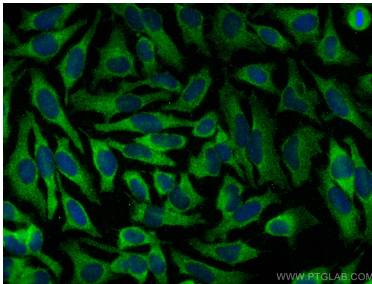
BXPc-3 cells were subjected to SDS PAGE followed by western blot with 67485-1-Ig (S100P antibody) at dilution of 1:3000 incubated at room temperature for 1.5 hours.



Immunohistochemical analysis of paraffin-embedded human pancreas cancer tissue slide using 67485-1-Ig (S100P antibody) at dilution of 1:8000 (under 10x lens). Heat mediated antigen retrieval with Tris-EDTA buffer (pH 9.0).



Immunohistochemical analysis of paraffin-embedded human pancreas cancer tissue slide using 67485-1-Ig (S100P antibody) at dilution of 1:8000 (under 40x lens). Heat mediated antigen retrieval with Tris-EDTA buffer (pH 9.0).



Immunofluorescent analysis of (-20°C Methanol) fixed HeLa cells using S100P antibody (67485-1-Ig, Clone: 1G6C3) at dilution of 1:800 and CoraLite®488-Conjugated AffiniPure Goat Anti-Mouse IgG(H+L).