

For Research Use Only

PRKACA Monoclonal antibody

Catalog Number: 67491-1-Ig

Featured Product

2 Publications



Basic Information

Catalog Number:

67491-1-Ig

Size:

150ul, Concentration: 800 ug/ml by Nanodrop and 500 ug/ml by Bradford method using BSA as the standard;

Source:

Mouse

Isotype:

IgG2a

Immunogen Catalog Number:

AG26400

GenBank Accession Number:

BC039846

GeneID (NCBI):

5566

UNIPROT ID:

P17612

Full Name:

protein kinase, cAMP-dependent, catalytic, alpha

Calculated MW:

41 kDa

Observed MW:

38-43 kDa

Purification Method:

Protein A purification

CloneNo.:

4G10D7

Recommended Dilutions:

WB 1:1000-1:6000

IHC 1:500-1:2000

Applications

Tested Applications:

WB, IHC, ELISA

Cited Applications:

WB

Species Specificity:

Human, Mouse, Rat

Cited Species:

human

Note-IHC: suggested antigen retrieval with TE buffer pH 9.0; (*) Alternatively, antigen retrieval may be performed with citrate buffer pH 6.0

Positive Controls:

WB : HeLa cells, LNCaP cells, HepG2 cells, Jurkat cells, K-562 cells, HSC-T6 cells, NIH/3T3 cells

IHC : human breast cancer tissue, human prostate cancer tissue

Background Information

PRKACA, also named as PKACA and PKA C-alpha, belongs to the protein kinase superfamily. AGC Ser/Thr protein kinase family and cAMP subfamily. It phosphorylates a large number of substrates in the cytoplasm and the nucleus.

Notable Publications

Author	Pubmed ID	Journal	Application
Faheem Seedat	39432712	Clin Sci (Lond)	WB
Li Xiang	38725539	Mediators Inflamm	WB

Storage

Storage:

Store at -20°C.

Storage Buffer:

PBS with 0.02% sodium azide and 50% glycerol pH 7.3.

Aliquoting is unnecessary for -20°C storage

*** 20ul sizes contain 0.1% BSA

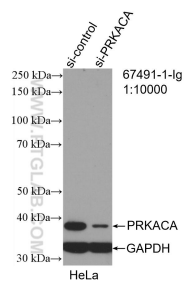
For technical support and original validation data for this product please contact:

T: 1 (888) 4PTGLAB (1-888-478-4522) (toll free in USA), or 1(312) 455-8498 (outside USA)

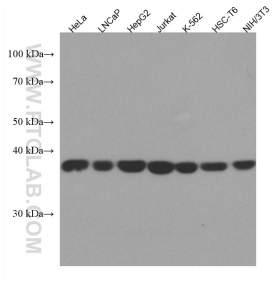
E: proteintech@ptglab.com
W: ptglab.com

This product is exclusively available under Proteintech Group brand and is not available to purchase from any other manufacturer.

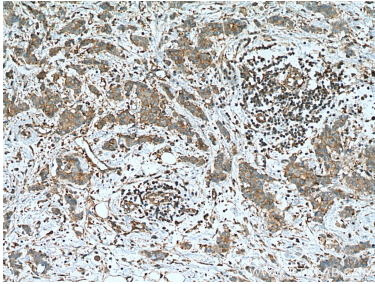
Selected Validation Data



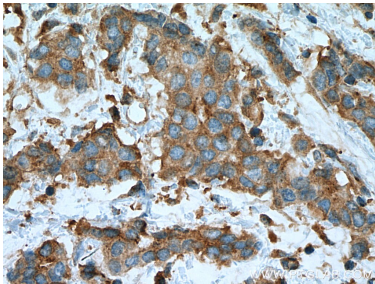
WB result of PRKACA antibody (67491-1-Ig; 1:10000; incubated at room temperature for 1.5 hours) with sh-Control and sh-PRKACA transfected HeLa cells.



Various lysates were subjected to SDS PAGE followed by western blot with 67491-1-Ig (PRKACA antibody) at dilution of 1:2300 incubated at room temperature for 1.5 hours.



Immunohistochemical analysis of paraffin-embedded human breast cancer tissue slide using 67491-1-Ig (PRKACA antibody) at dilution of 1:1000 (under 10x lens). Heat mediated antigen retrieval with Tris-EDTA buffer (pH 9.0).



Immunohistochemical analysis of paraffin-embedded human breast cancer tissue slide using 67491-1-Ig (PRKACA antibody) at dilution of 1:1000 (under 40x lens). Heat mediated antigen retrieval with Tris-EDTA buffer (pH 9.0).