

For Research Use Only

PRKACA Monoclonal antibody

Catalog Number: 67491-1-Ig **Featured Product**



Basic Information

Catalog Number: 67491-1-Ig	GenBank Accession Number: BC039846	Purification Method: Protein A purification
Size: 150ul , Concentration: 800 µg/ml by Nanodrop and 500 µg/ml by Bradford method using BSA as the standard;	GeneID (NCBI): 5566	CloneNo.: 4G10D7
Source: Mouse	Full Name: protein kinase, cAMP-dependent, catalytic, alpha	Recommended Dilutions: WB 1:1000-1:6000 IHC 1:500-1:2000
Isotype: IgG2a	Calculated MW: 41 kDa	
Immunogen Catalog Number: AG26400	Observed MW: 38-43 kDa	

Applications

Tested Applications:

IHC, WB, ELISA

Species Specificity:

Human, Mouse, Rat

Note-IHC: suggested antigen retrieval with TE buffer pH 9.0; (*) Alternatively, antigen retrieval may be performed with citrate buffer pH 6.0

Positive Controls:

WB : HeLa cells, LNCaP cells, HepG2 cells, Jurkat cells, K-562 cells, HSC-T6 cells, NIH/3T3 cells

IHC : human breast cancer tissue, human prostate cancer tissue

Background Information

PRKACA, also named as PKACA and PKA C-alpha, belongs to the protein kinase superfamily. AGC Ser/Thr protein kinase family and cAMP subfamily. It phosphorylates a large number of substrates in the cytoplasm and the nucleus.

Storage

Storage:

Store at -20°C.

Storage Buffer:

PBS with 0.02% sodium azide and 50% glycerol pH 7.3.

Aliquoting is unnecessary for -20°C storage

***** 20ul sizes contain 0.1% BSA**

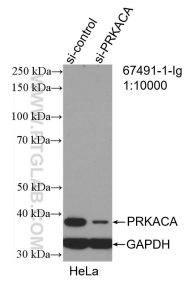
For technical support and original validation data for this product please contact:

T: 1 (888) 4PTGLAB (1-888-478-4522) (toll free in USA), or 1(312) 455-8498 (outside USA)

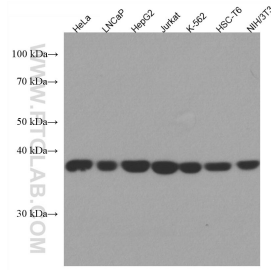
E: proteintech@ptglab.com
W: ptglab.com

This product is exclusively available under Proteintech Group brand and is not available to purchase from any other manufacturer.

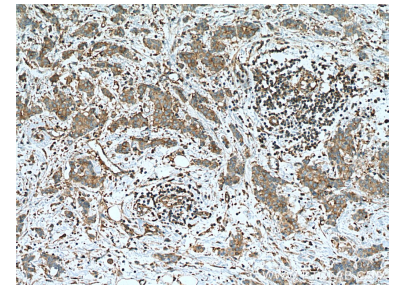
Selected Validation Data



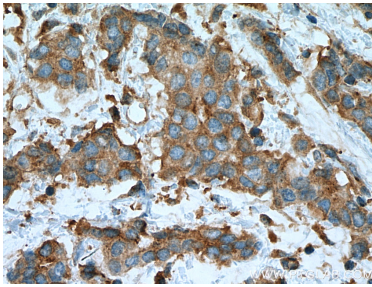
WB result of PRKACA antibody (67491-1-Ig; 1:10000; incubated at room temperature for 1.5 hours) with sh-Control and sh-PRKACA transfected HeLa cells.



Various lysates were subjected to SDS PAGE followed by western blot with 67491-1-Ig (PRKACA antibody) at dilution of 1:2300 incubated at room temperature for 1.5 hours.



Immunohistochemical analysis of paraffin-embedded human breast cancer tissue slide using 67491-1-Ig (PRKACA antibody) at dilution of 1:1000 (under 10x lens). Heat mediated antigen retrieval with Tris-EDTA buffer (pH 9.0).



Immunohistochemical analysis of paraffin-embedded human breast cancer tissue slide using 67491-1-Ig (PRKACA antibody) at dilution of 1:1000 (under 40x lens). Heat mediated antigen retrieval with Tris-EDTA buffer (pH 9.0).