

For Research Use Only

# EEF1A1 Monoclonal antibody, PBS Only



Catalog Number: 67495-1-PBS

## Basic Information

<b>Catalog Number:</b> 67495-1-PBS	<b>GenBank Accession Number:</b> BC014224	<b>Purification Method:</b> Protein A purification
<b>Size:</b> 100ug , Concentration: 1mg/ml by Nanodrop;	<b>GeneID (NCBI):</b> 1915	<b>CloneNo.:</b> 1A9F5
<b>Source:</b> Mouse	<b>UNIPROT ID:</b> P68104	
<b>Isotype:</b> IgG1	<b>Full Name:</b> eukaryotic translation elongation factor 1 alpha 1	
<b>Immunogen Catalog Number:</b> AG1938	<b>Calculated MW:</b> 462 aa, 50 kDa	
	<b>Observed MW:</b> 49 kDa	

## Applications

**Tested Applications:**  
Indirect ELISA, IF/ICC, IHC, WB

**Species Specificity:**  
rat, mouse, human

## Background Information

EEF1A1, also named as EEF1A, EF1A and LENG7, belongs to the GTP-binding elongation factor family. This protein promotes the GTP-dependent binding of aminoacyl-tRNA to the A-site of ribosomes during protein biosynthesis. It is a typical housekeeping gene product required for the maintenance of cell proliferation and/or survival. In addition, EEF1A1 protects the aminoester bond against hydrolysis until a correct match between the codon on mRNA and the anti-codon on tRNA can be achieved.

## Storage

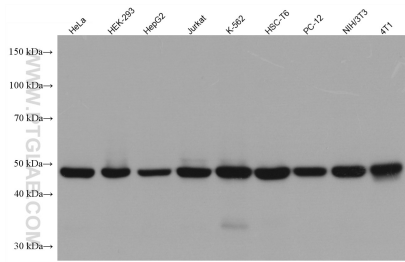
**Storage:**  
Store at -80°C.

**Storage Buffer:**  
PBS Only

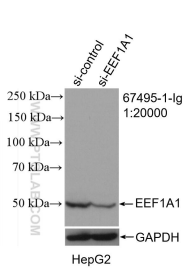
For technical support and original validation data for this product please contact:  
T: 1 (888) 4PTGLAB (1-888-478-4522) (toll free in USA), or 1(312) 455-8498 (outside USA)  
E: [proteintech@ptglab.com](mailto:proteintech@ptglab.com)  
W: [ptglab.com](http://ptglab.com)

This product is exclusively available under Proteintech Group brand and is not available to purchase from any other manufacturer.

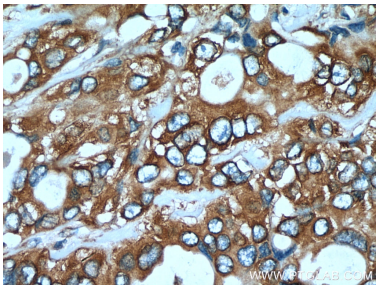
Selected Validation Data



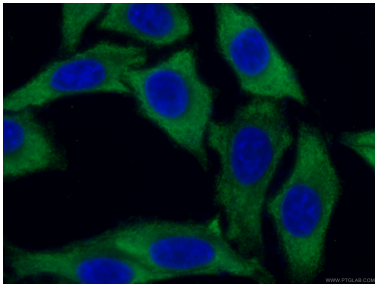
Various lysates were subjected to SDS PAGE followed by western blot with 67495-1-Ig (EEF 1A1 antibody) at dilution of 1:10000 incubated at room temperature for 1.5 hours. This data was developed using the same antibody clone with 67495-1-PBS in a different storage buffer formulation.



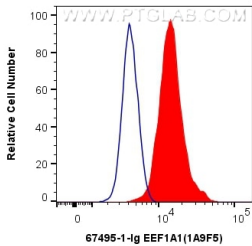
WB result of EEF1A1 antibody (67495-1-Ig; 1:20000; incubated at room temperature for 1.5 hours) with sh-Control and sh-EEF1A1 transfected HepG2 cells. This data was developed using the same antibody clone with 67495-1-PBS in a different storage buffer formulation.



Immunohistochemical analysis of paraffin-embedded human pancreas cancer tissue slide using 67495-1-Ig (EEF 1A1 antibody) at dilution of 1:300 (under 40x lens). Heat mediated antigen retrieval with Tris-EDTA buffer (pH 9.0). This data was developed using the same antibody clone with 67495-1-PBS in a different storage buffer formulation.



Immunofluorescent analysis of (-20°C Ethanol) fixed HepG2 cells using 67495-1-Ig (EEF 1A1 antibody), at dilution of 1:200 and CoraLite®488-Conjugated AffiniPure Goat Anti-Mouse IgG(H+L). This data was developed using the same antibody clone with 67495-1-PBS in a different storage buffer formulation.



1X10<sup>6</sup> HepG2 cells were intracellularly stained with 0.4 ug Anti-Human EEF1A1 (67495-1-Ig, Clone:1A9F5) and CoraLite®488-Conjugated AffiniPure Goat Anti-Mouse IgG(H+L) at dilution 1:1000 (red), or 0.4 ug Mouse IgG1 Isotype Control (MOPC-21) (65124-1-Ig, Clone: MOPC-21) (blue). Cells were fixed with 4% PFA and permeabilized with Flow Cytometry Perm Buffer (PF00011-C). This data was developed using the same antibody clone with 67495-1-PBS in a

