

For Research Use Only

AKR1B1 Monoclonal antibody

Catalog Number: 67498-1-Ig

Featured Product

2 Publications



Basic Information

Catalog Number:

67498-1-Ig

Size:

150ul, Concentration: 1000 ug/ml by Nanodrop and 500 ug/ml by Bradford method using BSA as the standard;

Source:

Mouse

Isotype:

IgG1

Immunogen Catalog Number:

AG7571

GenBank Accession Number:

BC000260

GeneID (NCBI):

231

UNIPROT ID:

P15121

Full Name:

aldo-keto reductase family 1, member B1 (aldose reductase)

Calculated MW:

36 kDa

Observed MW:

34 kDa

Purification Method:

Protein G purification

CloneNo.:

2F11G5

Recommended Dilutions:

WB 1:2000-1:10000

IHC 1:250-1:1000

IF/ICC 1:200-1:800

Applications

Tested Applications:

WB, IHC, IF/ICC, ELISA

Cited Applications:

WB

Species Specificity:

human, mouse

Cited Species:

human, mouse

Note-IHC: suggested antigen retrieval with TE buffer pH 9.0; (*) Alternatively, antigen retrieval may be performed with citrate buffer pH 6.0

Positive Controls:

WB : HEK-293 cells, HeLa cells, HepG2 cells, Jurkat cells, NIH/3T3 cells, 4T1 cells

IHC : human bladder tissue,

IF/ICC : BxPC-3 cells,

Notable Publications

Author	Pubmed ID	Journal	Application
Wei Zhou	34646828	Front Cell Dev Biol	WB
Liman Luo	35882293	Pharmacol Res	WB

Storage

Storage:

Store at -20°C. Stable for one year after shipment.

Storage Buffer:

PBS with 0.02% sodium azide and 50% glycerol, pH7.3

Aliquoting is unnecessary for -20°C storage

*** 20ul sizes contain 0.1% BSA

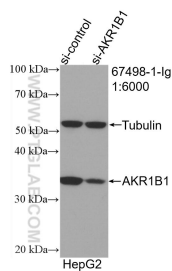
For technical support and original validation data for this product please contact:

T: 1 (888) 4PTGLAB (1-888-478-4522) (toll free in USA), or 1(312) 455-8498 (outside USA)

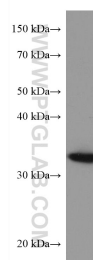
E: proteintech@ptglab.com
W: ptglab.com

This product is exclusively available under Proteintech Group brand and is not available to purchase from any other manufacturer.

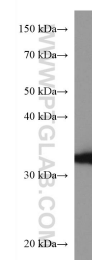
Selected Validation Data



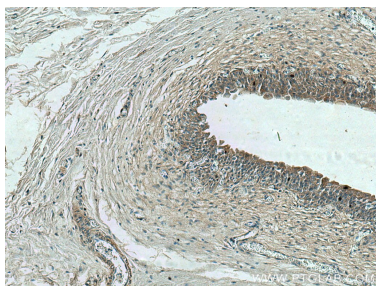
WB result of AKR1B1 antibody (67498-1-Ig; 1:6000; incubated at room temperature for 1.5 hours) with sh-Control and sh-AKR1B1 transfected HepG2 cells.



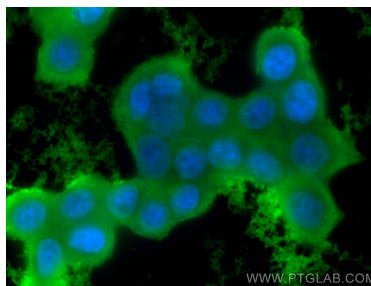
HeLa cells were subjected to SDS PAGE followed by western blot with 67498-1-Ig (AKR1B1 antibody) at dilution of 1:2500 incubated at room temperature for 1.5 hours.



HEK-293 cells were subjected to SDS PAGE followed by western blot with 67498-1-Ig (AKR1B1 antibody) at dilution of 1:2500 incubated at room temperature for 1.5 hours.



Immunohistochemical analysis of paraffin-embedded human bladder tissue slide using 67498-1-Ig (AKR1B1 antibody) at dilution of 1:500 (under 10x lens)..



Immunofluorescent analysis of (-20°C Ethanol) fixed BxPC-3 cells using AKR1B1 antibody (67498-1-Ig, Clone: 2F11G5) at dilution of 1:400 and Coralite® 488-Conjugated AffiniPure Goat Anti-Mouse IgG(H+L).