

For Research Use Only

RAB2A Monoclonal antibody

Catalog Number: 67501-1-Ig **2 Publications**



Basic Information

Catalog Number: 67501-1-Ig	GenBank Accession Number: BC008929	Purification Method: Protein A purification
Size: 150ul , Concentration: 1100 ug/ml by Nanodrop and 500 ug/ml by Bradford method using BSA as the standard;	GeneID (NCBI): 5862	CloneNo.: 3E1B10
Source: Mouse	UNIPROT ID: P61019	Recommended Dilutions: WB 1:2000-1:10000 IHC 1:50-1:500 IF-P 1:200-1:800 IF/ICC 1:400-1:1600
Isotype: IgG2b	Full Name: RAB2A, member RAS oncogene family	
Immunogen Catalog Number: AG7939	Calculated MW: 24 kDa	
	Observed MW: 21 kDa	

Applications

Tested Applications: WB, IHC, IF/ICC, IF-P, ELISA	Positive Controls: WB : U2OS cells, A549 cells, HeLa cells, HEK-293 cells, Jurkat cells, HSC-T6 cells, NIH/3T3 cells IHC : mouse brain tissue, IF-P : mouse brain tissue, IF/ICC : U2OS cells, HeLa cells
Cited Applications: WB, IF	
Species Specificity: human, mouse, rat	
Cited Species: human, mouse	
Note-IHC: suggested antigen retrieval with TE buffer pH 9.0; (*) Alternatively, antigen retrieval may be performed with citrate buffer pH 6.0	

Background Information

The protein belongs to the Rab family, members of which are small molecular weight guanosine triphosphatases (GTPases) that contain highly conserved domains involved in GTP binding and hydrolysis. The Rabs are membrane-bound proteins, involved in vesicular fusion and trafficking. This protein is a resident of pre-Golgi intermediates, and is required for protein transport from the endoplasmic reticulum (ER) to the Golgi complex. This antibody can recognize RAB2A and RAB2B.

Notable Publications

Author	Pubmed ID	Journal	Application
Min Xu	39496977	EMBO J	WB,IF
Takehito Ouchi	38989048	Front Physiol	IF

Storage

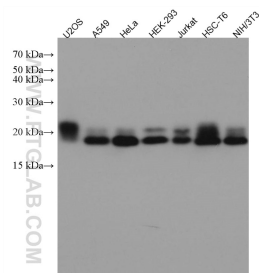
Storage:
Store at -20°C. Stable for one year after shipment.
Storage Buffer:
PBS with 0.02% sodium azide and 50% glycerol pH 7.3.
Aliquoting is unnecessary for -20°C storage

*** 20ul sizes contain 0.1% BSA

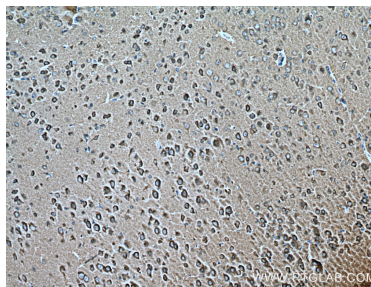
For technical support and original validation data for this product please contact:
T: 1 (888) 4PTGLAB (1-888-478-4522) (toll free in USA), or 1(312) 455-8498 (outside USA)
E: proteintech@ptglab.com
W: ptglab.com

This product is exclusively available under Proteintech Group brand and is not available to purchase from any other manufacturer.

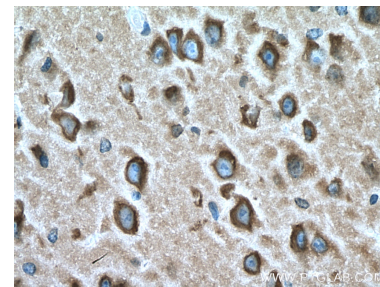
Selected Validation Data



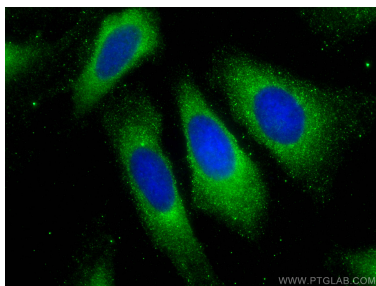
Various lysates were subjected to SDS PAGE followed by western blot with 67501-1-Ig (RAB2A antibody) at dilution of 1:5000 incubated at room temperature for 1.5 hours.



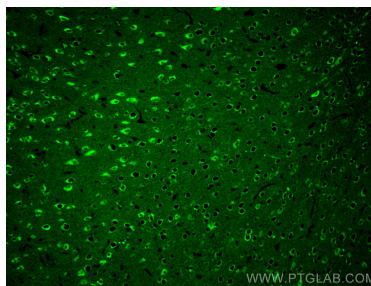
Immunohistochemical analysis of paraffin-embedded mouse brain tissue slide using 67501-1-Ig (RAB2A antibody) at dilution of 1:200 (under 10x lens). Heat mediated antigen retrieval with Tris-EDTA buffer (pH 9.0).



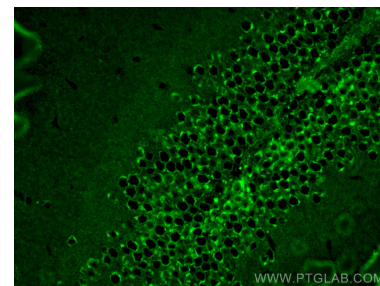
Immunohistochemical analysis of paraffin-embedded mouse brain tissue slide using 67501-1-Ig (RAB2A antibody) at dilution of 1:200 (under 40x lens). Heat mediated antigen retrieval with Tris-EDTA buffer (pH 9.0).



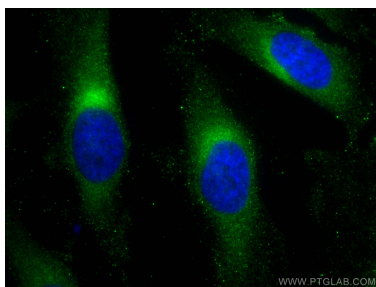
Immunofluorescent analysis of (-20°C Methanol) fixed U2OS cells using RAB2A antibody (67501-1-Ig, Clone: 3E1B10) at dilution of 1:800 and CoraLite®488-Conjugated Goat Anti-Mouse IgG(H+L).



Immunofluorescent analysis of (4% PFA) fixed mouse brain tissue using RAB2A antibody (67501-1-Ig, Clone: 3E1B10) at dilution of 1:400 and CoraLite®488-Conjugated Goat Anti-Mouse IgG(H+L).



Immunofluorescent analysis of (4% PFA) fixed mouse brain tissue using RAB2A antibody (67501-1-Ig, Clone: 3E1B10) at dilution of 1:400 and CoraLite®488-Conjugated Goat Anti-Mouse IgG(H+L).



Immunofluorescent analysis of (-20°C Methanol) fixed HeLa cells using RAB2A antibody (67501-1-Ig, Clone: 3E1B10) at dilution of 1:800 and CoraLite®488-Conjugated Goat Anti-Mouse IgG(H+L).