

For Research Use Only

TMF1 Monoclonal antibody

Catalog Number: 67505-1-Ig **Featured Product**



Basic Information

Catalog Number: 67505-1-Ig	GenBank Accession Number: BC126123	Purification Method: Protein A purification
Size: 150ul , Concentration: 2000 µg/ml by Nanodrop and 1000 µg/ml by Bradford method using BSA as the standard;	GeneID (NCBI): 7110	CloneNo.: 3G12F2
Source: Mouse	Full Name: TATA element modulatory factor 1	Recommended Dilutions: WB 1:5000-1:50000 IF 1:50-1:500
Isotype: IgG1	Calculated MW: 1093 aa, 123 kDa	
Immunogen Catalog Number: AG17666	Observed MW: 150-160 kDa	

Applications

Tested Applications: IF, WB, ELISA	Positive Controls:
Species Specificity: Human, mouse, rat	WB : LNCaP cells, HeLa cells, HepG2 cells, HEK-293 cells, Jurkat cells, K-562 cells, HSC-T6 cells, NIH/3T3 cells
	IF : HepG2 cells,

Background Information

TMF1, also named as ARA160, is a potential coactivator of the androgen receptor. TMF1 mediates STAT3 degradation. TMF1 plays critical roles in two RAB6-dependent retrograde transport processes: one from endosomes to the Golgi and the other from the Golgi to the ER. TMF1 binds the HIV-1 TATA element and inhibits transcriptional activation by the TATA-binding protein (TBP). The antibody is specific to TMF1. TMF1 can be detected as 150-160 kDa after posttranslational modification.

Storage

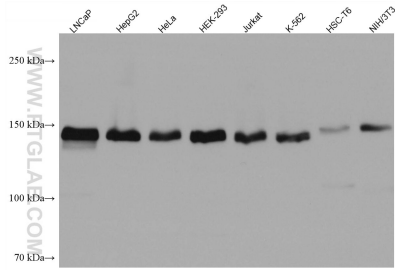
Storage:
Store at -20°C. Stable for one year after shipment.
Storage Buffer:
PBS with 0.02% sodium azide and 50% glycerol pH 7.3.
Aliquoting is unnecessary for -20°C storage

*** 20ul sizes contain 0.1% BSA

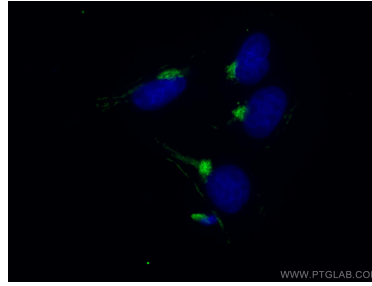
For technical support and original validation data for this product please contact:
T: 1 (888) 4PTGLAB (1-888-478-4522) (toll free in USA), or 1(312) 455-8498 (outside USA)
E: proteintech@ptglab.com
W: ptglab.com

This product is exclusively available under Proteintech Group brand and is not available to purchase from any other manufacturer.

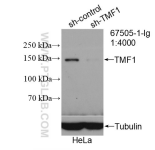
Selected Validation Data



Various lysates were subjected to SDS PAGE followed by western blot with 67505-1-Ig (TMF1 antibody) at dilution of 1:10000 incubated at room temperature for 1.5 hours.



Immunofluorescent analysis of (4% PFA) fixed HepG2 cells using 67505-1-Ig (TMF1 antibody) at dilution of 1:100 and CoraLite488-Conjugated AffiniPure Goat Anti-Mouse IgG(H+L).



WB result of TMF1 antibody (67505-1-Ig; 1:4000; incubated at room temperature for 1.5 hours) with sh-Control and sh-TMF1 transfected HeLa cells.