

# LSR Monoclonal antibody

Catalog Number: 67508-1-Ig

## Basic Information

**Catalog Number:**

67508-1-Ig

**Size:**

150ul , Concentration: 780 µg/ml by Bradford method using BSA as the standard;

**Source:**

Mouse

**Isotype:**

IgG1

**Immunogen Catalog Number:**

AG13205

**GenBank Accession Number:**

BC004381

**GeneID (NCBI):**

51599

**UNIPROT ID:**

Q86X29

**Full Name:**

lipolysis stimulated lipoprotein receptor

**Calculated MW:**

71 kDa

**Observed MW:**

68 kDa

**Purification Method:**

Protein G purification

**CloneNo.:**

1G9B7

**Recommended Dilutions:**

WB 1:500-1:2000

## Applications

**Tested Applications:**

WB, ELISA

**Species Specificity:**

Human

**Positive Controls:**

WB : LNCaP cells, MCF-7 cells

## Background Information

LSR (lipolysis stimulated lipoprotein receptor) is a lipoprotein receptor primarily expressed in the liver and activated by free fatty acids (PMID: 10224102). This remnant receptor binds both apoB- and apoE-containing lipoproteins and displays greatest affinity for TG-rich lipoproteins. Distribution of LSR causes embryonic lethality in mice, indicating that the expression of LSR is critical for liver and embryonic development (PMID: 15265030). Investigations show that LSR is a multimer consisting of a subunit (68 kDa) and  $\beta$  subunit (56 kDa) associated through disulfide bridges (PMID: 10224102; 19188430; 18644789).

## Storage

**Storage:**

Store at -20°C.

**Storage Buffer:**

PBS with 0.02% sodium azide and 50% glycerol pH 7.3.

Aliquoting is unnecessary for -20°C storage

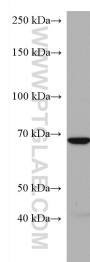
**\*\*\* 20ul sizes contain 0.1% BSA**

For technical support and original validation data for this product please contact:

T: 1 (888) 4PTGLAB (1-888-478-4522) (toll free in USA), or 1(312) 455-8498 (outside USA)

E: [proteintech@ptglab.com](mailto:proteintech@ptglab.com)  
W: [ptglab.com](http://ptglab.com)**This product is exclusively available under Proteintech Group brand and is not available to purchase from any other manufacturer.**

## Selected Validation Data



LNCaP cells were subjected to SDS PAGE followed by western blot with 67508-1-Ig (LSR antibody) at dilution of 1:2000 incubated at room temperature for 1.5 hours.