

For Research Use Only

SPARCL1 Monoclonal antibody

Catalog Number: 67511-1-Ig



Basic Information

Catalog Number: 67511-1-Ig	GenBank Accession Number: BC033721	Purification Method: Protein G purification
Size: 150ul , Concentration: 1600 µg/ml by Nanodrop and 1000 µg/ml by Bradford method using BSA as the standard;	GeneID (NCBI): 8404	CloneNo.: 1A9E7
Source: Mouse	Full Name: SPARC-like 1 (hevin)	Recommended Dilutions: WB 1:1000-1:6000
Isotype: IgG1	Calculated MW: 664 aa, 75 kDa	
Immunogen Catalog Number: AG29092	Observed MW: 140 kDa	

Applications

Tested Applications: WB, ELISA	Positive Controls: WB : human saliva, Raji cells
Species Specificity: Human	

Background Information

SPARC-like protein 1 (SPARCL1), also known as SC1 or Hevin, is an extracellular matrix glycoprotein that belongs to the SPARC family. SPARCL1 is widely expressed in normal and cancer tissues, and has been shown to regulate cellular adhesion and migration. SPARCL1 has been implicated in tumor initiation, formation, and progression of various cancers, including pancreatic, prostate, bladder, ovarian, breast and non-small cell lung cancers.

Storage

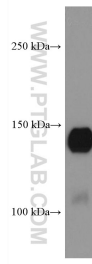
Storage:
Store at -20°C. Stable for one year after shipment.
Storage Buffer:
PBS with 0.02% sodium azide and 50% glycerol pH 7.3.
Aliquoting is unnecessary for -20°C storage

*** 20ul sizes contain 0.1% BSA

For technical support and original validation data for this product please contact:
T: 1 (888) 4PTGLAB (1-888-478-4522) (toll free in USA), or 1(312) 455-8498 (outside USA)
E: proteintech@ptglab.com
W: ptglab.com

This product is exclusively available under Proteintech Group brand and is not available to purchase from any other manufacturer.

Selected Validation Data



human saliva were subjected to SDS PAGE followed by western blot with 67511-1-Ig (SPARCL1 antibody) at dilution of 1:3000 incubated at room temperature for 1.5 hours.