

For Research Use Only

SPARCL1 Monoclonal antibody, PBS Only



Catalog Number: 67511-1-PBS

Basic Information

Catalog Number: 67511-1-PBS	GenBank Accession Number: BC033721	Purification Method: Protein G purification
Size: 100ug , Concentration: 1 mg/ml by Nanodrop;	GeneID (NCBI): 8404	CloneNo.: 1A9E7
Source: Mouse	UNIPROT ID: Q14515	
Isotype: IgG1	Full Name: SPARC-like 1 (hevin)	
Immunogen Catalog Number: AG29092	Calculated MW: 664 aa, 75 kDa	
	Observed MW: 140 kDa	

Applications

Tested Applications:
WB, Indirect ELISA

Species Specificity:
Human

Background Information

SPARC-like protein 1 (SPARCL1), also known as SC1 or Hevin, is an extracellular matrix glycoprotein that belongs to the SPARC family. SPARCL1 is widely expressed in normal and cancer tissues, and has been shown to regulate cellular adhesion and migration. SPARCL1 has been implicated in tumor initiation, formation, and progression of various cancers, including pancreatic, prostate, bladder, ovarian, breast and non-small cell lung cancers.

Storage

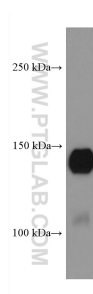
Storage:
Store at -80°C.

Storage Buffer:
PBS Only

For technical support and original validation data for this product please contact:
T: 1 (888) 4PTGLAB (1-888-478-4522) (toll free in USA), or 1(312) 455-8498 (outside USA)
E: proteintech@ptglab.com
W: ptglab.com

This product is exclusively available under Proteintech Group brand and is not available to purchase from any other manufacturer.

Selected Validation Data



human saliva were subjected to SDS PAGE followed by western blot with 67511-1-Ig (SPARCL1 antibody) at dilution of 1:3000 incubated at room temperature for 1.5 hours. This data was developed using the same antibody clone with 67511-1-PBS in a different storage buffer formulation.