

# BSEP Monoclonal antibody, PBS Only

Catalog Number: 67512-1-PBS

## Basic Information

<b>Catalog Number:</b> 67512-1-PBS	<b>GenBank Accession Number:</b> NM_003742	<b>Purification Method:</b> Protein G purification
<b>Size:</b> 100ug , Concentration: 1mg/ml by Nanodrop;	<b>GeneID (NCBI):</b> 8647	<b>CloneNo.:</b> 3C11D5
<b>Source:</b> Mouse	<b>UNIPROT ID:</b> O95342	
<b>Isotype:</b> IgG1	<b>Full Name:</b> ATP-binding cassette, sub-family B (MDR/TAP), member 11	
<b>Immunogen Catalog Number:</b> AG29135	<b>Calculated MW:</b> 146 kDa	
	<b>Observed MW:</b> 150-160 kDa	

## Applications

**Tested Applications:**  
WB, IF, IHC, ELISA

**Species Specificity:**  
Human, Mouse , Rat

## Background Information

ABCB11, also named as BSEP, belongs to the ABC transporter superfamily. ABCB11 involved in the ATP-dependent secretion of bile salts into the canaliculus of hepatocytes. Mutation of ABCB11 will cause the progressive familial intrahepatic cholestasis type 2 (PFIC2) and the benign recurrent intrahepatic cholestasis type 2 (BRIC2). Genetic variations in ABCB11 may play a role in drug-induced cholestasis causing liver damage. The calculated MW of ABCB11 is 146 kDa, 67512-1-Ig can detect bands around 150 kDa. It's reported that ABCB11 has several N-glycosylation sites, the observed higher molecular mass may due to posttranslational N-glycosylation. (PMID: 9545351, 24359682)

## Storage

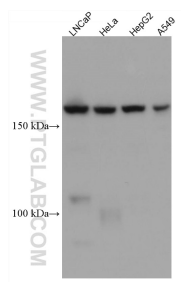
**Storage:**  
Store at -80°C.

**Storage Buffer:**  
PBS Only

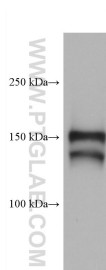
For technical support and original validation data for this product please contact:  
T: 1 (888) 4PTGLAB (1-888-478-4522) (toll free in USA), or 1(312) 455-8498 (outside USA)  
E: [proteintech@ptglab.com](mailto:proteintech@ptglab.com)  
W: [ptglab.com](http://ptglab.com)

This product is exclusively available under Proteintech Group brand and is not available to purchase from any other manufacturer.

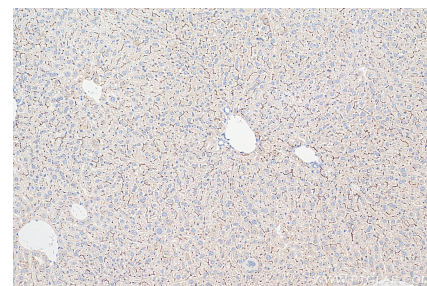
## Selected Validation Data



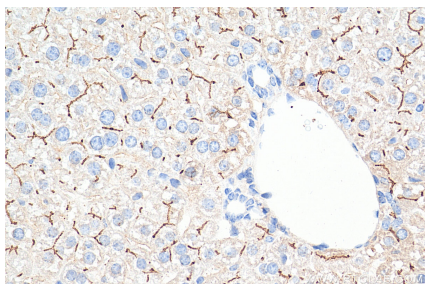
Various lysates were subjected to SDS PAGE followed by western blot with 67512-1-Ig (BSEP antibody) at dilution of 1:20000 incubated at room temperature for 1.5 hours. This data was developed using the same antibody clone with 67512-1-PBS in a different storage buffer formulation.



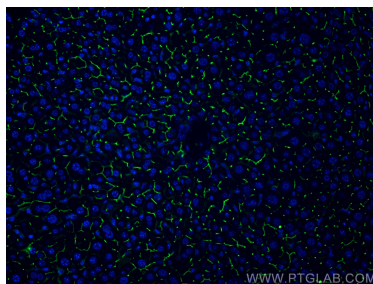
mouse liver tissue were subjected to SDS PAGE followed by western blot with 67512-1-Ig (BSEP antibody) at dilution of 1:10000 incubated at room temperature for 1.5 hours. This data was developed using the same antibody clone with 67512-1-PBS in a different storage buffer formulation.



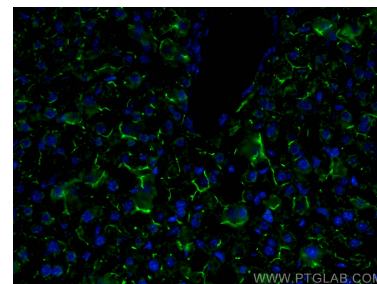
Immunohistochemical analysis of paraffin-embedded mouse liver tissue slide using 67512-1-Ig (BSEP antibody) at dilution of 1:16000 (under 10x lens). Heat mediated antigen retrieval with Tris-EDTA buffer (pH 9.0). This data was developed using the same antibody clone with 67512-1-PBS in a different storage buffer formulation.



Immunohistochemical analysis of paraffin-embedded mouse liver tissue slide using 67512-1-Ig (BSEP antibody) at dilution of 1:16000 (under 40x lens). Heat mediated antigen retrieval with Tris-EDTA buffer (pH 9.0). This data was developed using the same antibody clone with 67512-1-PBS in a different storage buffer formulation.



Immunofluorescent analysis of (4% PFA) fixed mouse liver tissue using BSEP antibody (67512-1-Ig, Clone: 3C11D5 ) at dilution of 1:10000 and CoraLite@488-Conjugated AffiniPure Goat Anti-Mouse IgG(H+L). This data was developed using the same antibody clone with 67512-1-PBS in a different storage buffer formulation.



Immunofluorescent analysis of (4% PFA) fixed mouse liver tissue using BSEP antibody (67512-1-Ig, Clone: 3C11D5 ) at dilution of 1:400 and CoraLite@488-Conjugated AffiniPure Goat Anti-Mouse IgG(H+L). This data was developed using the same antibody clone with 67512-1-PBS in a different storage buffer formulation.