

For Research Use Only

# PER2 (isoform 1) Monoclonal antibody

Catalog Number: 67513-1-Ig

12 Publications



## Basic Information

Catalog Number:

67513-1-Ig

Size:

150ul, Concentration: 1000 ug/ml by Nanodrop;

Source:

Mouse

Isotype:

IgG1

Immunogen Catalog Number:

AG29489

GenBank Accession Number:

NM\_022817

GeneID (NCBI):

8864

UNIPROT ID:

O15055

Full Name:

period homolog 2 (Drosophila)

Calculated MW:

137 kDa

Observed MW:

150~160 kDa

Purification Method:

Protein A purification

CloneNo.:

2E6C3

Recommended Dilutions:

WB 1:5000-1:50000

IF/ICC 1:400-1:1600

## Applications

Tested Applications:

WB, IF/ICC, ELISA

Cited Applications:

WB, IHC

Species Specificity:

human

Cited Species:

human, mouse, pig

Positive Controls:

WB : HEK-293 cells, L02 cells, Y79 cells, BxPC-3 cells, K-562 cells, HL-60 cells, THP-1 cells

IF/ICC : HeLa cells,

## Background Information

PER2, also named as KIAA0347, is a component of the circadian clock mechanism which is essential for generating circadian rhythms. Defects in PER2 are a cause of familial advanced sleep-phase syndrome (FASPS) which is characterized by very early sleep onset and offset. There are two isoforms of PER2: isoform 1 has an expected molecular size of about 140 kDa, and 67513-1-Ig detected molecular weight of 150-160 kDa (PMID:16675517), while isoform 2, known as PER2S (a second splicing variant of the human PER2 gene), has a molecular weight of about 45 kDa (PMID:26347774).

## Notable Publications

Author	Pubmed ID	Journal	Application
Xuekai Xiong	36093830	J Cell Sci	WB
Zhaoxia Wang	33244267	Cancer Manag Res	WB
Xiyan Tan	34124276	J Immunol Res	WB

## Storage

Storage:

Store at -20°C. Stable for one year after shipment.

Storage Buffer:

PBS with 0.02% sodium azide and 50% glycerol pH 7.3.

Aliquoting is unnecessary for -20°C storage

\*\*\* 20ul sizes contain 0.1% BSA

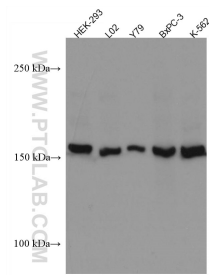
For technical support and original validation data for this product please contact:

T: 1 (888) 4PTGLAB (1-888-478-4522) (toll free in USA), or 1(312) 455-8498 (outside USA)

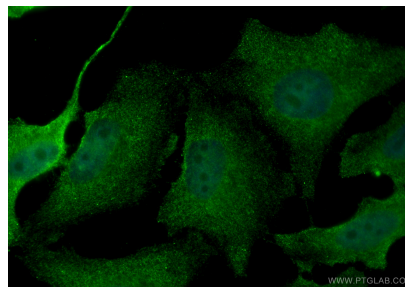
E: [proteintech@ptglab.com](mailto:proteintech@ptglab.com)  
W: [ptglab.com](http://ptglab.com)

This product is exclusively available under Proteintech Group brand and is not available to purchase from any other manufacturer.

## Selected Validation Data



Various lysates were subjected to SDS PAGE followed by western blot with 67513-1-Ig (PER2 antibody) at dilution of 1:10000 incubated at room temperature for 1.5 hours.



Immunofluorescent analysis of (4% PFA) fixed HeLa cells using PER2 (isoform 1) antibody (67513-1-Ig, Clone: 2E6C3 ) at dilution of 1:800 and CoraLite®488-Conjugated Goat Anti-Mouse IgG(H+L) (SA00013-1).