

For Research Use Only

STK32A Monoclonal antibody, PBS Only (Capture)



Catalog Number: 67528-1-PBS

Basic Information

Catalog Number: 67528-1-PBS	GenBank Accession Number: BC021666	Purification Method: Protein A purification
Size: 100ug , Concentration: 1mg/ml by Nanodrop;	GeneID (NCBI): 202374	CloneNo.: 1H2A6
Source: Mouse	UNIPROT ID: Q8WU08	
Isotype: IgG2a	Full Name: serine/threonine kinase 32A	
Immunogen Catalog Number: AG10942	Calculated MW: 396aa, 46 kDa; 166aa, 20 kDa	
	Observed MW: 50 kDa	

Applications

Tested Applications:
Cytometric bead array, Indirect ELISA, IHC, WB

Species Specificity:
human

Product Information

67528-1-PBS targets STK32A as part of a matched antibody pair:

MP50267-1: 67528-1-PBS capture and 67528-2-PBS detection (validated in Cytometric bead array)

MP50267-2: 67528-1-PBS capture and 67528-3-PBS detection (validated in Cytometric bead array)

Unconjugated mouse monoclonal antibody pair in PBS only (BSA and azide free) storage buffer at a concentration of 1 mg/mL, ready for conjugation.

This conjugation ready format makes antibodies ideal for use in many applications including: ELISAs, multiplex assays requiring matched pairs, mass cytometry, and multiplex imaging applications. Antibody use should be optimized by the end user for each application and assay.

Storage

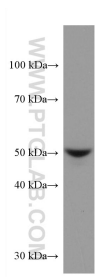
Storage:
Store at -80°C.

Storage Buffer:
PBS Only

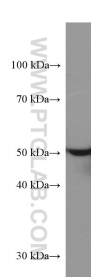
For technical support and original validation data for this product please contact:
T: 1 (888) 4PTGLAB (1-888-478-4522) (toll free in USA), or 1(312) 455-8498 (outside USA)
E: proteintech@ptglab.com
W: ptglab.com

This product is exclusively available under Proteintech Group brand and is not available to purchase from any other manufacturer.

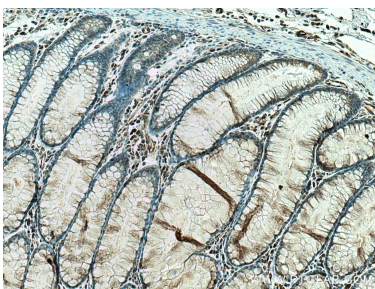
Selected Validation Data



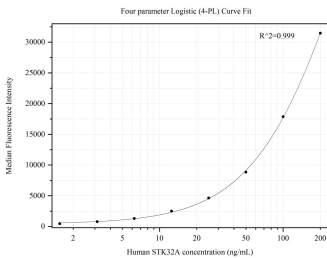
A549 cells were subjected to SDS PAGE followed by western blot with 67528-1-Ig (STK32A antibody) at dilution of 1:5000 incubated at room temperature for 1.5 hours. This data was developed using the same antibody clone with 67528-1-PBS in a different storage buffer formulation.



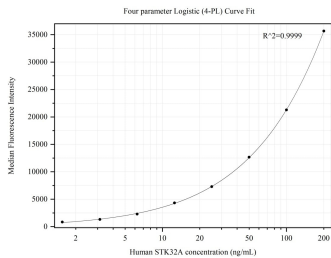
HeLa cells were subjected to SDS PAGE followed by western blot with 67528-1-Ig (STK32A antibody) at dilution of 1:5000 incubated at room temperature for 1.5 hours. This data was developed using the same antibody clone with 67528-1-PBS in a different storage buffer formulation.



Immunohistochemical analysis of paraffin-embedded human colon cancer tissue slide using 67528-1-Ig (STK32A antibody) at dilution of 1:1000 (under 10x lens). Heat mediated antigen retrieval with Tris-EDTA buffer (pH 9.0). This data was developed using the same antibody clone with 67528-1-PBS in a different storage buffer formulation.



Cytometric bead array standard curve of MP50267-1, STK32A Monoclonal Matched Antibody Pair, PBS Only. Capture antibody: 67528-1-PBS. Detection antibody: 67528-2-PBS. Standard:Ag10942. Range: 1.563-200 ng/mL.



Cytometric bead array standard curve of MP50267-2, STK32A Monoclonal Matched Antibody Pair, PBS Only. Capture antibody: 67528-1-PBS. Detection antibody: 67528-3-PBS. Standard:Ag10942. Range: 1.563-200 ng/mL.