

For Research Use Only

SLC2A9 Monoclonal antibody

Catalog Number: 67530-1-Ig **10 Publications**



Basic Information

Catalog Number: 67530-1-Ig	GenBank Accession Number: BC018897	Purification Method: Protein A purification
Size: 150ul , Concentration: 1500 ug/ml by Nanodrop and 778 ug/ml by Bradford method using BSA as the standard;	GeneID (NCBI): 56606	CloneNo.: 2D6E1
Source: Mouse	UNIPROT ID: Q9NRM0	Recommended Dilutions: WB 1:5000-1:50000 IHC 1:500-1:2000 IF-P 1:200-1:800
Isotype: IgG1	Full Name: solute carrier family 2 (facilitated glucose transporter), member 9	
Immunogen Catalog Number: AG24135	Calculated MW: 540 aa, 59 kDa	
	Observed MW: 56-59 kDa	

Applications

Tested Applications: WB, IHC, IF-P, ELISA	Positive Controls:
Cited Applications: WB, IHC, IF	WB : SMMC-7721 cells, pig liver tissue, HepG2 cells, L02 cells, HuH-7 cells, rat liver tissue, mouse liver tissue, rabbit liver tissue, HSC-T6 cells
Species Specificity: Human, Mouse, Rat, Rabbit, Pig	IHC : human liver tissue, human hepatocirrhosis tissue
Cited Species: human, mouse, rat	IF-P : human hepatocirrhosis tissue, human kidney tissue
Note-IHC: suggested antigen retrieval with TE buffer pH 9.0; (*) Alternatively, antigen retrieval may be performed with citrate buffer pH 6.0	

Notable Publications

Author	Pubmed ID	Journal	Application
Yan Huang	36387593	Curr Res Food Sci	WB
Wen-Hao Xu	31910301	J Pharm Pharmacol	WB
Lin-Zi Li	36644440	Evid Based Complement Alternat Med	IHC

Storage

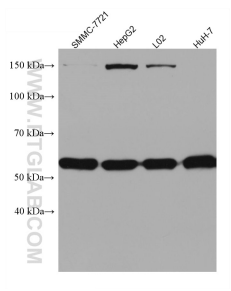
Storage:
Store at -20°C. Stable for one year after shipment.
Storage Buffer:
PBS with 0.02% sodium azide and 50% glycerol pH 7.3.
Aliquoting is unnecessary for -20°C storage

*** 20ul sizes contain 0.1% BSA

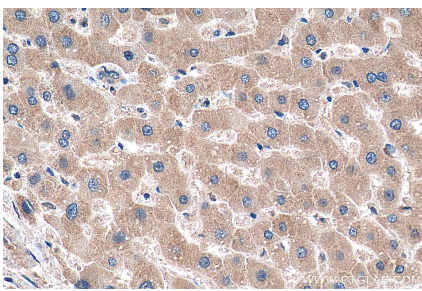
For technical support and original validation data for this product please contact:
T: 1 (888) 4PTGLAB (1-888-478-4522) (toll free in USA), or 1(312) 455-8498 (outside USA)
E: proteintech@ptglab.com
W: ptglab.com

This product is exclusively available under Proteintech Group brand and is not available to purchase from any other manufacturer.

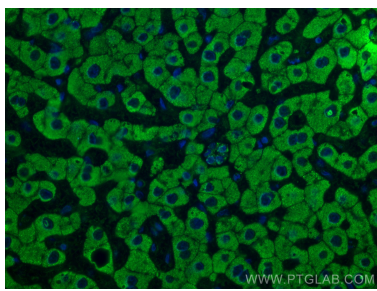
Selected Validation Data



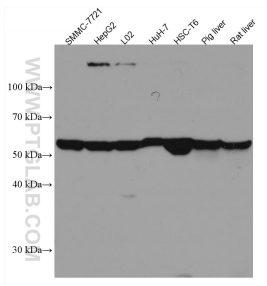
Various lysates were subjected to SDS PAGE followed by western blot with 67530-1-Ig (SLC2A9 antibody) at dilution of 1:10000 incubated at room temperature for 1.5 hours.



Immunohistochemical analysis of paraffin-embedded human liver tissue slide using 67530-1-Ig (SLC2A9 antibody) at dilution of 1:1000 (under 40x lens). Heat mediated antigen retrieval with Tris-EDTA buffer (pH 9.0).



Immunofluorescent analysis of (4% PFA) fixed human hepatocirrhosis tissue using SLC2A9 antibody (67530-1-Ig, Clone: 2D6E1) at dilution of 1:400 and CoraLite®488-Conjugated Goat Anti-Mouse IgG(H+L).



Various lysates were subjected to SDS PAGE followed by western blot with 67530-1-Ig (SLC2A9 antibody) at dilution of 1:10000 incubated at room temperature for 1.5 hours.