

For Research Use Only

AMT Monoclonal antibody, PBS Only (Detector)

Catalog Number: 67532-1-PBS



Basic Information

Catalog Number: 67532-1-PBS	GenBank Accession Number: BC007546	Purification Method: Protein G purification
Size: 100ug , Concentration: 1mg/ml by Nanodrop;	GeneID (NCBI): 275	CloneNo.: 3E7D4
Source: Mouse	UNIPROT ID: P48728	
Isotype: IgG1	Full Name: aminomethyltransferase	
Immunogen Catalog Number: AG26644	Calculated MW: 44 kDa	
	Observed MW: 37-44 kDa	

Applications

Tested Applications:
WB, IHC, IF/ICC, Cytometric bead array, Indirect ELISA

Species Specificity:
human, mouse, rat, pig

Product Information

67532-1-PBS targets AMT as part of a matched antibody pair:

MP50403-2: 67532-3-PBS capture and 67532-1-PBS detection (validated in Cytometric bead array)

Unconjugated mouse monoclonal antibody pair in PBS only (BSA and azide free) storage buffer at a concentration of 1 mg/mL, ready for conjugation.

This conjugation ready format makes antibodies ideal for use in many applications including: ELISAs, multiplex assays requiring matched pairs, mass cytometry, and multiplex imaging applications. Antibody use should be optimized by the end user for each application and assay.

Storage

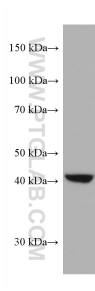
Storage:
Store at -80°C.

Storage Buffer:
PBS Only

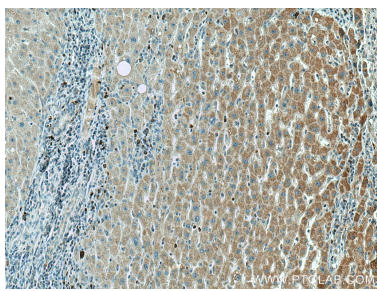
For technical support and original validation data for this product please contact:
T: 1 (888) 4PTGLAB (1-888-478-4522) (toll free in USA), or 1(312) 455-8498 (outside USA)
E: proteintech@ptglab.com
W: ptglab.com

This product is exclusively available under Proteintech Group brand and is not available to purchase from any other manufacturer.

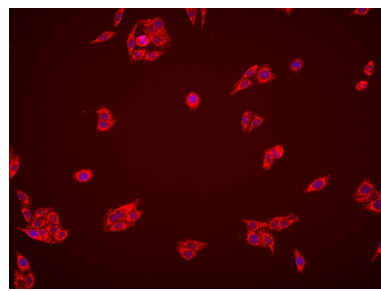
Selected Validation Data



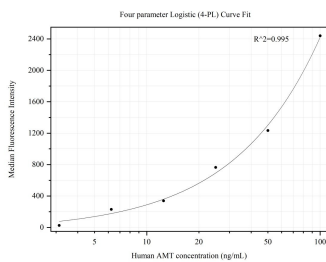
pig liver tissue were subjected to SDS PAGE followed by western blot with 67532-1-Ig (AMT antibody) at dilution of 1:3000 incubated at room temperature for 1.5 hours. This data was developed using the same antibody clone with 67532-1-PBS in a different storage buffer formulation.



Immunohistochemical analysis of paraffin-embedded human liver cancer tissue slide using 67532-1-Ig (AMT antibody) at dilution of 1:1000 (under 10x lens). Heat mediated antigen retrieval with Tris-EDTA buffer (pH 9.0). This data was developed using the same antibody clone with 67532-1-PBS in a different storage buffer formulation.



Immunofluorescent analysis of (4% PFA) fixed HepG2 cells using AMT antibody (67532-1-Ig, Clone: 3E7D4) at dilution of 1:1000 and Multi-rAb CoraLite® Plus 594-Goat Anti-Mouse Recombinant Secondary Antibody (H+L) (Cat.NO. RGAM004). This data was developed using the same antibody clone with 67532-1-PBS in a different storage buffer formulation.



Cytometric bead array standard curve of MP50403-2, AMT Monoclonal Matched Antibody Pair, PBS Only. Capture antibody: 67532-3-PBS. Detection antibody: 67532-1-PBS. Standard:Ag26644. Range: 3.125-100 ng/mL.