

For Research Use Only

# TIM23 Monoclonal antibody

Catalog Number: 67535-1-Ig **7 Publications**



## Basic Information

<b>Catalog Number:</b> 67535-1-Ig	<b>GenBank Accession Number:</b> BC062707	<b>Purification Method:</b> Protein G purification
<b>Size:</b> 150ul , Concentration: 1000 ug/ml by Bradford method using BSA as the standard;	<b>GeneID (NCBI):</b> 100287932	<b>CloneNo.:</b> 3H10F5
<b>Source:</b> Mouse	<b>UNIPROT ID:</b> O14925	<b>Recommended Dilutions:</b> WB 1:2000-1:10000 IHC 1:50-1:500 IF/ICC 1:200-1:800
<b>Isotype:</b> IgG1	<b>Full Name:</b> translocase of inner mitochondrial membrane 23	
<b>Immunogen Catalog Number:</b> AG27069	<b>Calculated MW:</b> 22 kDa	
	<b>Observed MW:</b> 22 kDa	

## Applications

<b>Tested Applications:</b> WB, IHC, IF/ICC, ELISA	<b>Positive Controls:</b>
<b>Cited Applications:</b> WB, IF	<b>WB :</b> A549 cells, RAW 264.7 cells, HeLa cells, MCF-7 cells, Jurkat cells, K-562 cells, HSC-T6 cells, NIH/3T3 cells
<b>Species Specificity:</b> human, mouse, rat	<b>IHC :</b> human liver cancer tissue,
<b>Cited Species:</b> human, mouse	<b>IF/ICC :</b> HepG2 cells,
<b>Note-IHC: suggested antigen retrieval with TE buffer pH 9.0; (*) Alternatively, antigen retrieval may be performed with citrate buffer pH 6.0</b>	

## Background Information

Tim23 is a mitochondrial inner membrane protein essential for import of preproteins into the matrix. Tim23 together with Tim17 and Tim44 form the Tim23 complex which mediates the import of nuclear encoded preproteins into the mitochondria. Tim23 is commonly used as loading control for mitochondrial inner membrane protein.

## Notable Publications

Author	Pubmed ID	Journal	Application
Yinjuan Song	34720021	Autophagy	WB,IF
Bo Zhang	36588386	Autophagy	WB
Ning Feng	39414994	Commun Biol	WB

## Storage

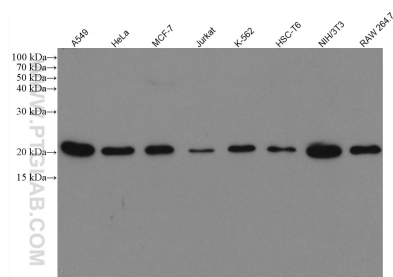
**Storage:**  
Store at -20°C. Stable for one year after shipment.  
**Storage Buffer:**  
PBS with 0.02% sodium azide and 50% glycerol, pH7.3  
Aliquoting is unnecessary for -20°C storage

\*\*\* 20ul sizes contain 0.1% BSA

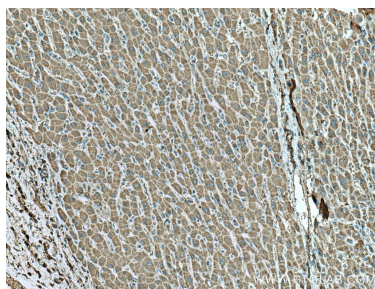
For technical support and original validation data for this product please contact:  
T: 1 (888) 4PTGLAB (1-888-478-4522) (toll free in USA), or 1(312) 455-8498 (outside USA)  
E: [proteintech@ptglab.com](mailto:proteintech@ptglab.com)  
W: [ptglab.com](http://ptglab.com)

This product is exclusively available under Proteintech Group brand and is not available to purchase from any other manufacturer.

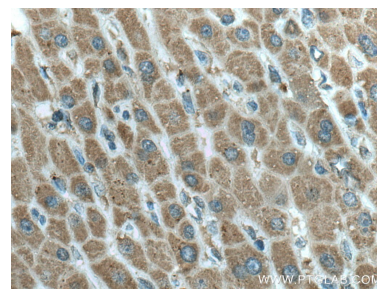
## Selected Validation Data



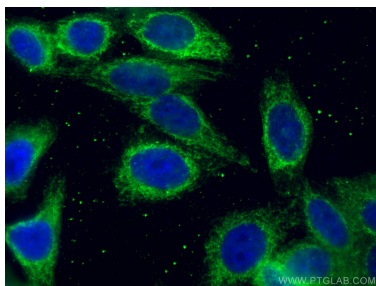
Various lysates were subjected to SDS PAGE followed by western blot with 67535-1-Ig (Tim23 antibody) at dilution of 1:5000 incubated at room temperature for 1.5 hours.



Immunohistochemical analysis of paraffin-embedded human liver cancer tissue slide using 67535-1-Ig (Tim23 antibody) at dilution of 1:200 (under 10x lens). Heat mediated antigen retrieval with Tris-EDTA buffer (pH 9.0).



Immunohistochemical analysis of paraffin-embedded human liver cancer tissue slide using 67535-1-Ig (Tim23 antibody) at dilution of 1:200 (under 40x lens). Heat mediated antigen retrieval with Tris-EDTA buffer (pH 9.0).



Immunofluorescent analysis of (4% PFA) fixed HepG2 cells using TIM23 antibody (67535-1-Ig, Clone: 3H10F5) at dilution of 1:400 and CoraLite®488-Conjugated AffiniPure Goat Anti-Mouse IgG(H+L).