

For Research Use Only

Tim23 Monoclonal antibody

Catalog Number: 67535-1-Ig **7 Publications**



Basic Information

Catalog Number: 67535-1-Ig	GenBank Accession Number: BC062707	Purification Method: Protein G purification
Size: 150ul , Concentration: 1000 ug/ml by Bradford method using BSA as the standard;	GeneID (NCBI): 10431	CloneNo.: 3H10F5
Source: Mouse	UNIPROT ID: O14925	Recommended Dilutions: WB 1:2000-1:10000 IHC 1:50-1:500 IF/ICC 1:200-1:800
Isotype: IgG1	Full Name: translocase of inner mitochondrial membrane 23 homolog (yeast)	
Immunogen Catalog Number: AG27069	Calculated MW: 22 kDa	
	Observed MW: 22 kDa	

Applications

Tested Applications: WB, IHC, IF/ICC, ELISA	Positive Controls:
Cited Applications: WB, IF	WB : A549 cells, RAW 264.7 cells, HeLa cells, MCF-7 cells, Jurkat cells, K-562 cells, HSC-T6 cells, NIH/3T3 cells
Species Specificity: Human, Mouse, Rat	IHC : human liver cancer tissue,
Cited Species: human, mouse	IF/ICC : HepG2 cells,
Note-IHC: suggested antigen retrieval with TE buffer pH 9.0; (*) Alternatively, antigen retrieval may be performed with citrate buffer pH 6.0	

Background Information

Tim23 is a mitochondrial inner membrane protein essential for import of preproteins into the matrix. Tim23 together with Tim17 and Tim44 form the Tim23 complex which mediates the import of nuclear encoded preproteins into the mitochondria. Tim23 is commonly used as loading control for mitochondrial inner membrane protein.

Notable Publications

Author	Pubmed ID	Journal	Application
Yinjuan Song	34720021	Autophagy	WB, IF
Bo Zhang	36588386	Autophagy	WB
Ning Feng	39414994	Commun Biol	WB

Storage

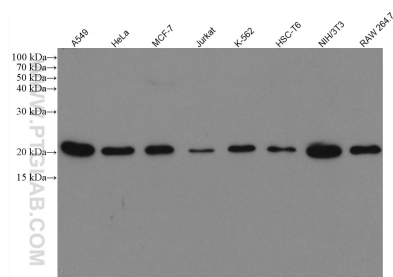
Storage:
Store at -20°C. Stable for one year after shipment.
Storage Buffer:
PBS with 0.02% sodium azide and 50% glycerol pH 7.3.
Aliquoting is unnecessary for -20°C storage

*** 20ul sizes contain 0.1% BSA

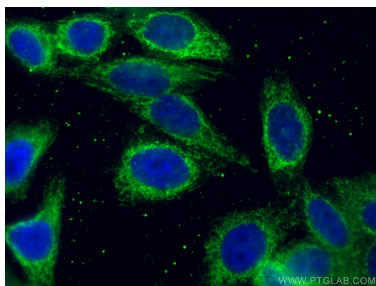
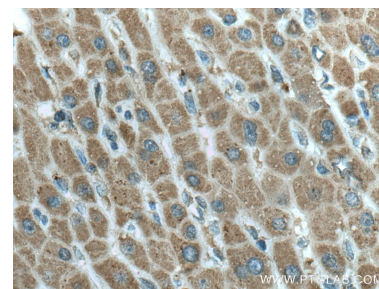
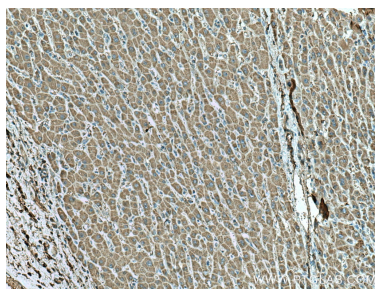
For technical support and original validation data for this product please contact:
T: 1 (888) 4PTGLAB (1-888-478-4522) (toll free in USA), or 1(312) 455-8498 (outside USA)
E: proteintech@ptglab.com
W: ptglab.com

This product is exclusively available under Proteintech Group brand and is not available to purchase from any other manufacturer.

Selected Validation Data



Various lysates were subjected to SDS PAGE followed by western blot with 67535-1-Ig (Tim23 antibody) at dilution of 1:5000 incubated at room temperature for 1.5 hours.



Immunofluorescent analysis of (4% PFA) fixed HepG2 cells using Tim23 antibody (67535-1-Ig, Clone: 3H10F5) at dilution of 1:400 and CoraLite®488-Conjugated Goat Anti-Mouse IgG(H+L).