

For Research Use Only

# RAB8A Monoclonal antibody

Catalog Number: 67536-1-Ig



## Basic Information

<b>Catalog Number:</b> 67536-1-Ig	<b>GenBank Accession Number:</b> NM_005370	<b>Purification Method:</b> Protein G purification
<b>Size:</b> 150ul , Concentration: 1300 µg/ml by Nanodrop and 507 µg/ml by Bradford method using BSA as the standard;	<b>GeneID (NCBI):</b> 4218	<b>CloneNo.:</b> 1D12G4
<b>Source:</b> Mouse	<b>Full Name:</b> RAB8A, member RAS oncogene family	<b>Recommended Dilutions:</b> WB 1:500-1:2000
<b>Isotype:</b> IgG1	<b>Calculated MW:</b> 24 kDa	
	<b>Observed MW:</b> 24 kDa	

## Applications

**Tested Applications:**  
WB, ELISA

**Species Specificity:**  
Human

### Positive Controls:

WB : HeLa cells, THP-1 cells, HL-60 cells, K-562 cells, Jurkat cells, HepG2 cells, HEK-293 cells

## Background Information

### Storage

**Storage:**  
Store at -20°C.

**Storage Buffer:**  
PBS with 0.02% sodium azide and 50% glycerol pH 7.3.

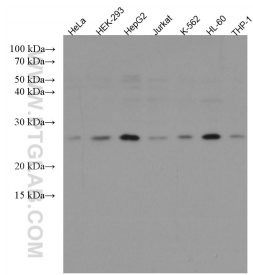
Aliquoting is unnecessary for -20°C storage

**\*\*\* 20ul sizes contain 0.1% BSA**

For technical support and original validation data for this product please contact:  
T: 1 (888) 4PTGLAB (1-888-478-4522) (toll free in USA), or 1(312) 455-8498 (outside USA)      E: proteintech@ptglab.com  
W: ptglab.com

**This product is exclusively available under Proteintech Group brand and is not available to purchase from any other manufacturer.**

## Selected Validation Data



Various lysates were subjected to SDS PAGE followed by western blot with 67536-1-Ig (RAB8A antibody) at dilution of 1:1000 incubated at room temperature for 1.5 hours.