

For Research Use Only

RAB8A Monoclonal antibody, PBS Only

Catalog Number: 67536-1-PBS



Basic Information

Catalog Number:

67536-1-PBS

Size:

100ug, Concentration: 1mg/ml by Nanodrop;

Source:

Mouse

Isotype:

IgG1

GenBank Accession Number:

NM_005370

GeneID (NCBI):

4218

UNIPROT ID:

P61006

Full Name:

RAB8A, member RAS oncogene family

Calculated MW:

24 kDa

Observed MW:

24 kDa

Purification Method:

Protein G purification

CloneNo.:

1D12G4

Applications

Tested Applications:

WB, IF/ICC, Indirect ELISA

Species Specificity:

human

Storage

Storage:

Store at -80°C.

Storage Buffer:

PBS Only

For technical support and original validation data for this product please contact:

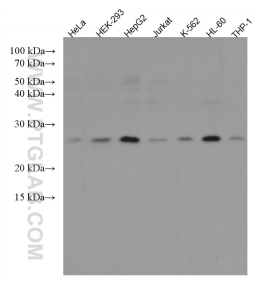
T: 1 (888) 4PTGLAB (1-888-478-4522) (toll free in USA), or 1(312) 455-8498 (outside USA)

E: proteintech@ptglab.com

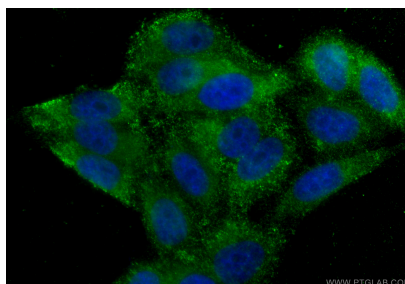
W: ptglab.com

This product is exclusively available under Proteintech Group brand and is not available to purchase from any other manufacturer.

Selected Validation Data



Various lysates were subjected to SDS PAGE followed by western blot with 67536-1-Ig (RAB8A antibody) at dilution of 1:1000 incubated at room temperature for 1.5 hours. This data was developed using the same antibody clone with 67536-1-PBS in a different storage buffer formulation.



Immunofluorescent analysis of (4% PFA) fixed HepG2 cells using RAB8A antibody (67536-1-Ig, Clone: 1D12G4) at dilution of 1:800 and CoraLite®488-Conjugated Goat Anti-Mouse IgG(H+L) (SA00013-1). This data was developed using the same antibody clone with 67536-1-PBS in a different storage buffer formulation.