

For Research Use Only

KLRB1/CD161 Monoclonal antibody

Catalog Number: 67537-1-Ig **7 Publications**



Basic Information

Catalog Number: 67537-1-Ig	GenBank Accession Number: BC114516	Purification Method: Protein A purification
Size: 150ul , Concentration: 1500 ug/ml by Nanodrop;	GeneID (NCBI): 3820	CloneNo.: 3D8F5
Source: Mouse	ENSEMBL Gene ID: ENSG00000111796	Recommended Dilutions: WB 1:1000-1:6000 IHC 1:2000-1:8000
Isotype: IgG1	UNIPROT ID: Q12918	
Immunogen Catalog Number: AG27117	Full Name: killer cell lectin-like receptor subfamily B, member 1	
	Calculated MW: 225 aa, 25 kDa	
	Observed MW: 32 kDa	

Applications

Tested Applications: WB, IHC, ELISA	Positive Controls:
Cited Applications: WB, IHC, IF	WB : human spleen tissue,
Species Specificity: Human	IHC : human tonsillitis tissue,
Cited Species: human	
Note-IHC: suggested antigen retrieval with TE buffer pH 9.0; (*) Alternatively, antigen retrieval may be performed with citrate buffer pH 6.0	

Background Information

CD161, also known as KLRB1 or NKR-P1A, is a type II transmembrane C-type lectin-like receptor and is expressed on the cell membrane as disulfide-linked homodimer (PMID: 8077657). It is expressed by the majority of NK cells and subsets of peripheral T cells, including both CD4+ and CD8+ T cells, and is expressed preferentially on adult T cells with a "memory" antigenic phenotype (PMID: 8077657; 22566826). Expression of CD161 correlates with the cytotoxic function of CD16+ NK cells, and ligation of CD161 with its ligand LLT1 inhibits NK cell cytotoxicity and cytokine secretion (PMID: 29686665).

Notable Publications

Author	Pubmed ID	Journal	Application
Qianshan Hou	39507529	Front Immunol	IHC
Siwei Xu	38983163	J Thorac Dis	WB
Bingxin Liu	38806057	Cell Rep Med	IF

Storage

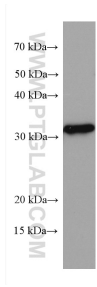
Storage:
Store at -20°C. Stable for one year after shipment.
Storage Buffer:
PBS with 0.02% sodium azide and 50% glycerol pH 7.3.
Aliquoting is unnecessary for -20°C storage

***** 20ul sizes contain 0.1% BSA**

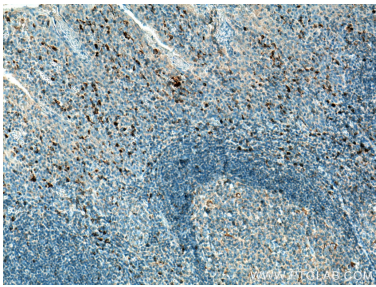
For technical support and original validation data for this product please contact:
T: 1 (888) 4PTGLAB (1-888-478-4522) (toll free in USA), or 1(312) 455-8498 (outside USA)
E: proteintech@ptglab.com
W: ptglab.com

This product is exclusively available under Proteintech Group brand and is not available to purchase from any other manufacturer.

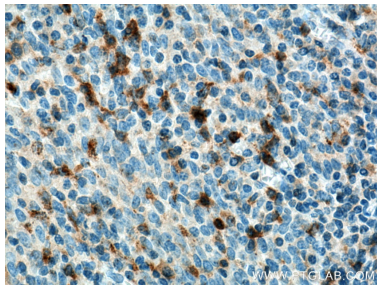
Selected Validation Data



human spleen tissue were subjected to SDS PAGE followed by western blot with 67537-1-Ig (KLRB1/CD161 antibody) at dilution of 1:3000 incubated at room temperature for 1.5 hours.



Immunohistochemical analysis of paraffin-embedded human tonsillitis tissue slide using 67537-1-Ig (KLRB1/CD161 antibody) at dilution of 1:4000 (under 10x lens). Heat mediated antigen retrieval with Tris-EDTA buffer (pH 9.0).



Immunohistochemical analysis of paraffin-embedded human tonsillitis tissue slide using 67537-1-Ig (KLRB1/CD161 antibody) at dilution of 1:4000 (under 40x lens). Heat mediated antigen retrieval with Tris-EDTA buffer (pH 9.0).