

For Research Use Only

CCT8 Monoclonal antibody

Catalog Number: 67539-1-Ig

Featured Product

4 Publications



Basic Information

Catalog Number:

67539-1-Ig

Size:

150ul, Concentration: 1700 ug/ml by Nanodrop and 1000 ug/ml by Bradford method using BSA as the standard;

Source:

Mouse

Isotype:

IgG2a

Immunogen Catalog Number:

AG30082

GenBank Accession Number:

BC012584

GeneID (NCBI):

10694

UNIPROT ID:

P50990

Full Name:

chaperonin containing TCP1, subunit 8 (theta)

Calculated MW:

548 aa, 60 kDa

Observed MW:

60 kDa

Purification Method:

Protein A purification

CloneNo.:

1A7C3

Recommended Dilutions:

WB 1:5000-1:50000

IHC 1:1000-1:4000

IF/ICC 1:750-1:3000

Applications

Tested Applications:

WB, IHC, IF/ICC, ELISA

Cited Applications:

WB, IHC, IP

Species Specificity:

Human, mouse, rat

Cited Species:

human

Note-IHC: suggested antigen retrieval with TE buffer pH 9.0; (*) Alternatively, antigen retrieval may be performed with citrate buffer pH 6.0

Positive Controls:

WB : HEK-293 cells, NIH/3T3 cells, A549 cells, HeLa cells, Jurkat cells, K-562 cells, HSC-T6 cells

IHC : human liver cancer tissue,

IF/ICC : MCF-7 cells,

Background Information

CCT8, also named as C21orf112, CCTQ, KIAA0002, CCT-theta, TCP-1-theta and NY-REN-15, belongs to the TCP-1 chaperonin family. It is a molecular chaperone; assists the folding of proteins upon ATP hydrolysis. As part of the BBS/CCT complex, CCT8 may play a role in the assembly of BBSome, a complex involved in ciliogenesis regulating transports vesicles to the cilia. Dysregulation of CCT8 has been linked to proliferation and invasion of tumors.

Notable Publications

| Author | Pubmed ID | Journal | Application |
|-------------|-----------|----------------------|-------------|
| Xinyu Ma | 35366418 | Cell | WB |
| Ruijuan Du | 39259093 | Medicine (Baltimore) | IHC |
| Zhiqiang Wu | 37928427 | J Cancer | WB,IHC,IP |

Storage

Storage:

Store at -20°C. Stable for one year after shipment.

Storage Buffer:

PBS with 0.02% sodium azide and 50% glycerol pH 7.3.

Aliquoting is unnecessary for -20°C storage

*** 20ul sizes contain 0.1% BSA

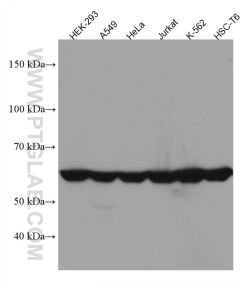
For technical support and original validation data for this product please contact:

T: 1 (888) 4PTGLAB (1-888-478-4522) (toll free in USA), or 1(312) 455-8498 (outside USA)

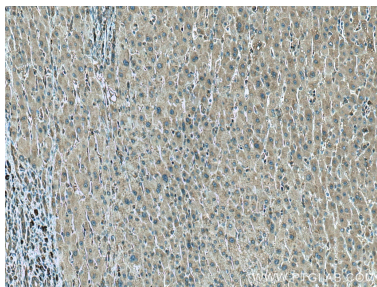
E: proteintech@ptglab.com
W: ptglab.com

This product is exclusively available under Proteintech Group brand and is not available to purchase from any other manufacturer.

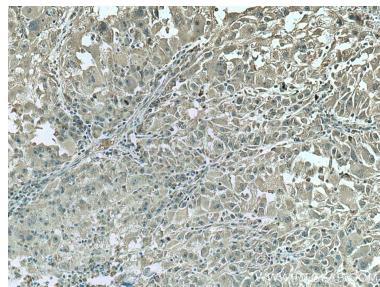
Selected Validation Data



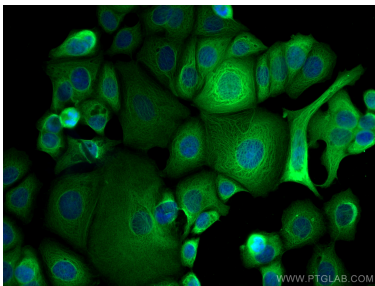
Various lysates were subjected to SDS PAGE followed by western blot with 67539-1-Ig (CCT8 antibody) at dilution of 1:20000 incubated at room temperature for 1.5 hours.



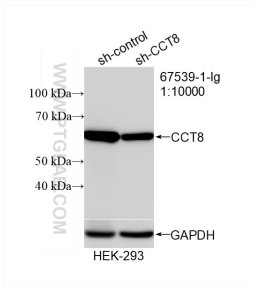
Immunohistochemical analysis of paraffin-embedded human liver cancer tissue slide using 67539-1-Ig (CCT8 antibody) at dilution of 1:2000 (under 10x lens). Heat mediated antigen retrieval with Tris-EDTA buffer (pH 9.0).



Immunohistochemical analysis of paraffin-embedded human liver cancer tissue slide using 67539-1-Ig (CCT8 antibody) at dilution of 1:2000 (under 10x lens). Heat mediated antigen retrieval with Tris-EDTA buffer (pH 9.0).



Immunofluorescent analysis of (-20°C Methanol) fixed MCF-7 cells using CCT8 antibody (67539-1-Ig, Clone: 1A7C3) at dilution of 1:1500 and CoraLite®488-Conjugated Goat Anti-Mouse IgG(H+L).



WB result of CCT8 antibody (67539-1-Ig; 1:10000; incubated at room temperature for 1.5 hours) with sh-Control and sh-CCT8 transfected HEK-293 cells.