

RHOC Monoclonal antibody

Catalog Number: 67542-1-Ig

Basic Information

| | | |
|--|--|--|
| Catalog Number: 67542-1-Ig | GenBank Accession Number: BC007245 | Purification Method: Protein A purification |
| Size: 150ul , Concentration: 2100 ug/ml by 389 Nanodrop and 1000 ug/ml by Bradford method using BSA as the standard; | GeneID (NCBI): P08134 | CloneNo.: 1G1C1 |
| Source: Mouse | UNIPROT ID: P08134 | Recommended Dilutions: WB 1:5000-1:20000 IHC 1:400-1:1600 IF/ICC 1:200-1:800 |
| Isotype: IgG1 | Full Name: ras homolog gene family, member C | |
| Immunogen Catalog Number: AG14633 | Calculated MW: 22 kDa | |
| | Observed MW: 22 kDa | |

Applications

| | |
|--|---|
| Tested Applications: WB, IHC, IF/ICC, FC (Intra), ELISA | Positive Controls: WB : LNCaP cells, HeLa cells, HepG2 cells, Jurkat cells, K-562 cells, HSC-T6 cells, C6 cells, NIH/3T3 cells, HEK- 293 cells, PC-12 cells, RAW 264.7 cells |
| Species Specificity: human, mouse, rat | IHC : human small intestine tissue, |
| Note-IHC: suggested antigen retrieval with TE buffer pH 9.0; (*) Alternatively, antigen retrieval may be performed with citrate buffer pH 6.0 | IF/ICC : HeLa cells, |

Background Information

Ras homolog family member C (RHOC) encodes a Rho-related GTP-binding protein, which belongs to small GTPase superfamily and also Rho family. RHOC. Regulates a signal transduction pathway linking plasma membrane receptors to the assembly of focal adhesions and actin stress fibers. Expression of RHOC contributes to metastatic phenotype of melanoma cells and is associated with multiple cancers including gastric carcinomas, ovarian carcinomas and breast cancer as well.

Storage

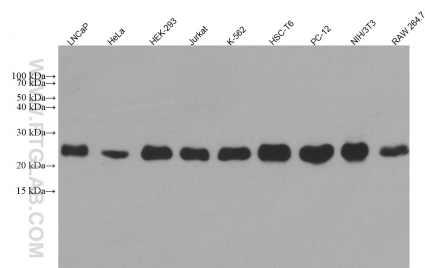
Storage:
Store at -20°C. Stable for one year after shipment.
Storage Buffer:
PBS with 0.02% sodium azide and 50% glycerol pH 7.3.
Aliquoting is unnecessary for -20°C storage

*** 20ul sizes contain 0.1% BSA

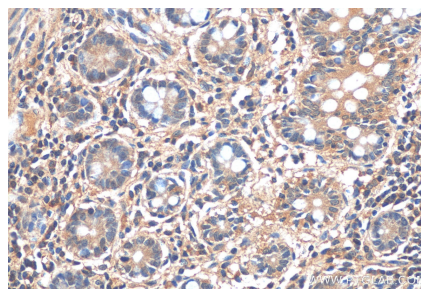
For technical support and original validation data for this product please contact:
T: 1 (888) 4PTGLAB (1-888-478-4522) (toll free in USA), or 1(312) 455-8498 (outside USA)
E: proteintech@ptglab.com
W: ptglab.com

This product is exclusively available under Proteintech Group brand and is not available to purchase from any other manufacturer.

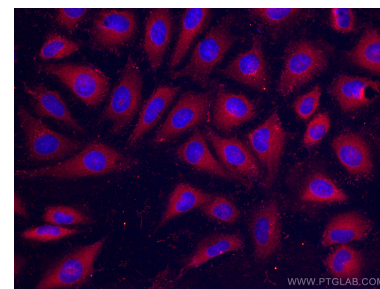
Selected Validation Data



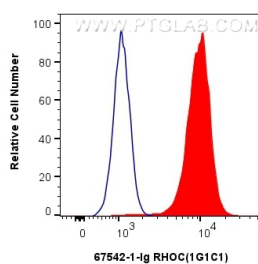
Various lysates were subjected to SDS PAGE followed by western blot with 67542-1-Ig (RHOC antibody) at dilution of 1:20000 incubated at room temperature for 1.5 hours.



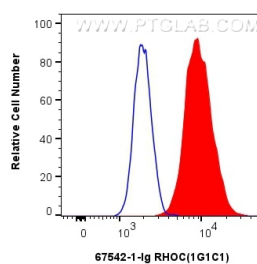
Immunohistochemical analysis of paraffin-embedded human small intestine tissue slide using 67542-1-Ig (RHOC antibody) at dilution of 1:800 (under 40x lens).



Immunofluorescent analysis of (4% PFA) fixed HeLa cells using RHOC antibody (67542-1-Ig, Clone: 1G1C1) at dilution of 1:400 and CoraLite®488-Conjugated AffiniPure Goat Anti-Mouse IgG(H+L).



1×10^6 Jurkat cells were intracellularly stained with 0.4 ug RHOC Monoclonal antibody (67542-1-Ig, Clone:1G1C1) and CoraLite®488-Conjugated Goat Anti-Mouse IgG(H+L) (SA00013-1)(red), or 0.4 ug Mouse IgG1 isotype control Mouse McAb (66360-1-Ig, Clone: 1F8D3) (blue). Cells were fixed with 4% PFA and permeabilized with Flow Cytometry Perm Buffer (PF00011-C).



1×10^6 HepG2 cells were intracellularly stained with 0.4 ug RHOC Monoclonal antibody (67542-1-Ig, Clone:1G1C1) and CoraLite®488-Conjugated Goat Anti-Mouse IgG(H+L) (SA00013-1)(red), or 0.4 ug Mouse IgG1 isotype control Mouse McAb (66360-1-Ig, Clone: 1F8D3) (blue). Cells were fixed with 4% PFA and permeabilized with Flow Cytometry Perm Buffer (PF00011-C).