

For Research Use Only

CRX Monoclonal antibody

Catalog Number: 67555-1-Ig



Basic Information

Catalog Number: 67555-1-Ig	GenBank Accession Number: BC016664	Purification Method: Protein G purification
Size: 150ul , Concentration: 1000 ug/ml by Bradford method using BSA as the standard;	GeneID (NCBI): 1406	CloneNo.: 1C3C11
Source: Mouse	UNIPROT ID: O43186	Recommended Dilutions: WB 1:1000-1:6000 IHC 1:2000-1:8000
Isotype: IgG1	Full Name: cone-rod homeobox	
Immunogen Catalog Number: AG30086	Calculated MW: 299 aa, 32 kDa	
	Observed MW: 37 kDa	

Applications

Tested Applications: WB, IHC, ELISA	Positive Controls:
Species Specificity: Human, mouse, rat, pig	WB : rat retina tissue, Y79 cells, mouse retina tissue, pig retina tissue
Note-IHC: suggested antigen retrieval with TE buffer pH 9.0; (*) Alternatively, antigen retrieval may be performed with citrate buffer pH 6.0	IHC : mouse eye tissue,

Background Information

Cone-rod homeobox (Crx) is a homeodomain transcription factor and member of the Otx family, which has been thought to play a critical role in determining and maintaining the phenotype of both pinealocytes and retinal photoreceptors [PMID:17467693]. In the mammalian retina, Crx plays an essential role in the normal development and maintenance of cones and rods and regulates expression of the network of genes that characterize the retina [PMID:17653270]. Elimination of Crx by disruption of the homeobox domain results in loss of the image-forming visual system but not the non-image-forming visual system controlling circadian rhythms [PMID:20438719].

Storage

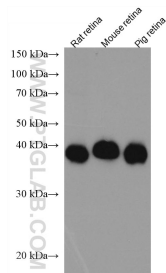
Storage:
Store at -20°C. Stable for one year after shipment.
Storage Buffer:
PBS with 0.02% sodium azide and 50% glycerol pH 7.3.
Aliquoting is unnecessary for -20°C storage

*** 20ul sizes contain 0.1% BSA

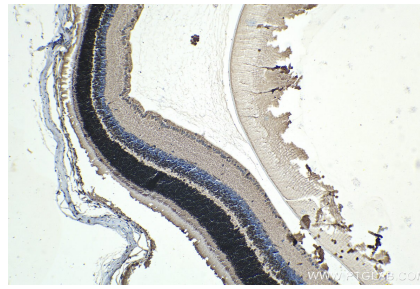
For technical support and original validation data for this product please contact:
T: 1 (888) 4PTGLAB (1-888-478-4522) (toll free in USA), or 1(312) 455-8498 (outside USA)
E: proteintech@ptglab.com
W: ptglab.com

This product is exclusively available under Proteintech Group brand and is not available to purchase from any other manufacturer.

Selected Validation Data



Various lysates were subjected to SDS PAGE followed by western blot with 67555-1-Ig (CRX antibody) at dilution of 1:3000 incubated at room temperature for 1.5 hours.



Immunohistochemical analysis of paraffin-embedded mouse eye tissue slide using 67555-1-Ig (CRX antibody) at dilution of 1:4000 (under 10x lens). Heat mediated antigen retrieval with Tris-EDTA buffer (pH 9.0).