

# MTMR14 Monoclonal antibody, PBS Only

Catalog Number: 67561-1-PBS

## Basic Information

<b>Catalog Number:</b> 67561-1-PBS	<b>GenBank Accession Number:</b> BC050626	<b>Purification Method:</b> Protein A purification
<b>Size:</b> 100ug , Concentration: 1 mg/ml by Nanodrop;	<b>GeneID (NCBI):</b> 64419	<b>CloneNo.:</b> 1A8B2
<b>Source:</b> Mouse	<b>UNIPROT ID:</b> Q8NCE2	
<b>Isotype:</b> IgG2b	<b>Full Name:</b> myotubularin related protein 14	
<b>Immunogen Catalog Number:</b> AG6883	<b>Calculated MW:</b> 72 kDa	
	<b>Observed MW:</b> 74 kDa	

## Applications

**Tested Applications:**  
WB, IF, IHC, Indirect ELISA

**Species Specificity:**  
Human, mouse, rat

## Background Information

MTMR14, also known as Jumpy, belongs to the MTM1/MTMRs family which has 15 members that divided into two subgroup: catalytically inactive and active. MTMR14 is a catalytically active member possessing an active phosphatase domain, that specifically dephosphorylates PI3P and phosphatidylinositol (3,5)-bisphosphate (PI3,5P2) at position 3 on inositol ring. A remarkable feature of the MTM1/MTMRs family is the association between a catalytically inactive member and a catalytically active member, which plays an important regulatory role. MTMR14 has 3 isoforms with molecular weight of 60-72 kDa, and also can be detected as a higher molecular weight due to the heterodimerization with other MTMR members.

## Storage

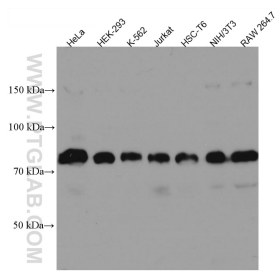
**Storage:**  
Store at -80°C.

**Storage Buffer:**  
PBS Only

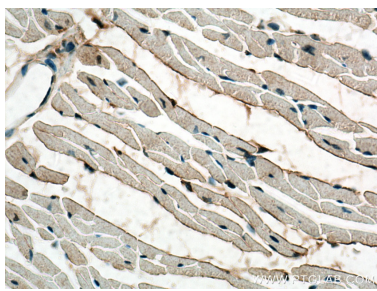
For technical support and original validation data for this product please contact:  
T: 1 (888) 4PTGLAB (1-888-478-4522) (toll free in USA), or 1(312) 455-8498 (outside USA)  
E: [proteintech@ptglab.com](mailto:proteintech@ptglab.com)  
W: [ptglab.com](http://ptglab.com)

This product is exclusively available under Proteintech Group brand and is not available to purchase from any other manufacturer.

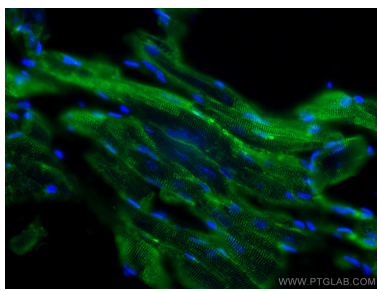
## Selected Validation Data



Various lysates were subjected to SDS PAGE followed by western blot with 67561-1-Ig (MTMR14 antibody) at dilution of 1:3000 incubated at room temperature for 1.5 hours. This data was developed using the same antibody clone with 67561-1-PBS in a different storage buffer formulation.



Immunohistochemical analysis of paraffin-embedded mouse heart tissue slide using 67561-1-Ig (MTMR14 antibody) at dilution of 1:1000 (under 40x lens). Heat mediated antigen retrieval with Tris-EDTA buffer (pH 9.0). This data was developed using the same antibody clone with 67561-1-PBS in a different storage buffer formulation.



Immunofluorescent analysis of (4% PFA) fixed mouse heart tissue using MTMR14 antibody (67561-1-Ig, Clone: 1A8B2 ) at dilution of 1:400 and CoraLite®488-Conjugated AffiniPure Goat Anti-Mouse IgG(H+L). This data was developed using the same antibody clone with 67561-1-PBS in a different storage buffer formulation.