

For Research Use Only

PAK6 Monoclonal antibody

Catalog Number: 67562-1-Ig



Basic Information

Catalog Number:

67562-1-Ig

Size:

150ul, Concentration: 1200 ug/ml by Nanodrop and 520 ug/ml by Bradford method using BSA as the standard;

Source:

Mouse

Isotype:

IgG1

Immunogen Catalog Number:

AG27692

GenBank Accession Number:

BC035596

GeneID (NCBI):

56924

UNIPROT ID:

Q9NQU5

Full Name:

p21 protein (Cdc42/Rac)-activated kinase 6

Calculated MW:

681 aa, 75 kDa

Observed MW:

70-75 kDa

Purification Method:

Protein A purification

CloneNo.:

3G8C1

Recommended Dilutions:

WB 1:1000-1:4000

IF/ICC 1:400-1:1600

Applications

Tested Applications:

WB, IF/ICC, ELISA

Species Specificity:

Human

Positive Controls:

WB : HEK-293 cells, K-562 cells

IF/ICC : HEK-293 cells,

Background Information

PAK6(p21-activated kinase 6) is a serine/threonine kinase belonging to the p21-activated kinase (PAK) family. This protein plays a role in the regulation of gene transcription and may protect cells from apoptosis through phosphorylation of BAD. Northern blot analysis revealed that PAK6 is highly expressed in testis and prostate tissues (PMID:11278661).

Storage

Storage:

Store at -20°C.

Storage Buffer:

PBS with 0.02% sodium azide and 50% glycerol pH 7.3.

Aliquoting is unnecessary for -20°C storage

*** 20ul sizes contain 0.1% BSA

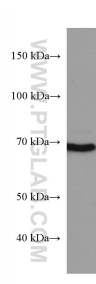
For technical support and original validation data for this product please contact:

T: 1 (888) 4PTGLAB (1-888-478-4522) (toll free in USA), or 1(312) 455-8498 (outside USA)

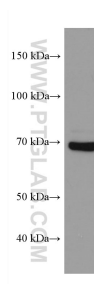
E: proteintech@ptglab.com
W: ptglab.com

This product is exclusively available under Proteintech Group brand and is not available to purchase from any other manufacturer.

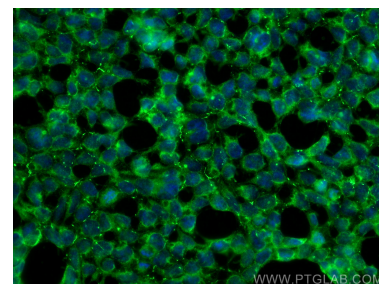
Selected Validation Data



K-562 cells were subjected to SDS PAGE followed by western blot with 67562-1-Ig (PAK6 antibody) at dilution of 1:2000 incubated at room temperature for 1.5 hours.



HEK-293 cells were subjected to SDS PAGE followed by western blot with 67562-1-Ig (PAK6 antibody) at dilution of 1:2000 incubated at room temperature for 1.5 hours.



Immunofluorescent analysis of (-20°C Ethanol) fixed HEK-293 cells using PAK6 antibody (67562-1-Ig, Clone: 3G8C1) at dilution of 1:400 and CoraLite®488-Conjugated AffiniPure Goat Anti-Mouse IgG(H+L).