

For Research Use Only

# RPS14 Monoclonal antibody

Catalog Number: 67566-1-Ig

Featured Product



## Basic Information

Catalog Number:

67566-1-Ig

GenBank Accession Number:

BC003401

Purification Method:

Protein A purification

Size:

150ul, Concentration: 2000 ug/ml by  
Nanodrop and 1000 ug/ml by Bradford  
method using BSA as the standard;

GeneID (NCBI):

6208

CloneNo.:

3D5H5

Source:

Mouse

UNIPROT ID:

P62263

Recommended Dilutions:

WB 1:5000-1:50000

IHC 1:500-1:2000

IF/ICC 1:400-1:1600

Isotype:

IgG2b

Full Name:

ribosomal protein S14

Calculated MW:

16 kDa

Immunogen Catalog Number:

AG30032

Observed MW:

16 kDa

## Applications

Tested Applications:

WB, IHC, IF/ICC, ELISA

Species Specificity:

human, mouse, rat

**Note-IHC: suggested antigen retrieval with  
TE buffer pH 9.0; (\*) Alternatively, antigen  
retrieval may be performed with citrate  
buffer pH 6.0**

Positive Controls:

WB : A549 cells, HeLa cells, HepG2 cells, HuH-7 cells, K-  
562 cells, HSC-T6 cells, PC-12 cells, NIH/3T3 cells, 4T1  
cells

IHC : human urothelial carcinoma tissue,

IF/ICC : HepG2 cells,

## Background Information

The mammalian ribosome consists of 4 RNA species and approximately 80 different proteins. The ribosomal proteins are encoded by complex gene families that include at least 1 active intron-containing gene and multiple processed pseudogenes [PMID 3785212]. The RPS14 gene, encoding a ribosomal protein that belongs to the 40S ribosome, and mapping to the commonly deleted region (CDR) of the 5q- syndrome, shows haploinsufficiency in the CD34+ cells of patients with this disorder [PMID:22430631].

## Storage

Storage:

Store at -20°C. Stable for one year after shipment.

Storage Buffer:

PBS with 0.02% sodium azide and 50% glycerol pH 7.3.

Aliquoting is unnecessary for -20°C storage

\*\*\* 20ul sizes contain 0.1% BSA

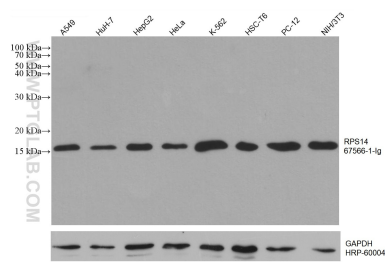
For technical support and original validation data for this product please contact:

T: 1 (888) 4PTGLAB (1-888-478-4522) (toll free  
in USA), or 1(312) 455-8498 (outside USA)

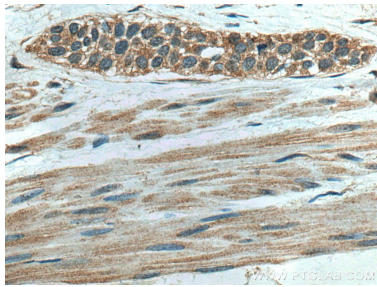
E: proteintech@ptglab.com  
W: ptglab.com

This product is exclusively available under Proteintech Group brand and is not available to purchase from any other manufacturer.

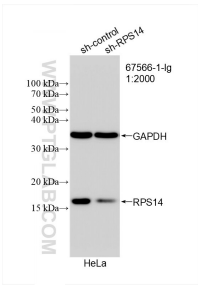
Selected Validation Data



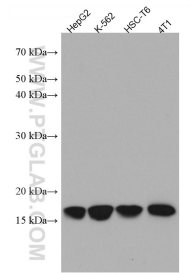
Various lysates were subjected to SDS PAGE followed by western blot with 67566-1-Ig (RPS14 antibody) at dilution of 1:10000 incubated at room temperature for 1.5 hours. The membrane was stripped and reblotted with HRP-conjugated GAPDH Monoclonal antibody (HRP-60004) as loading control.



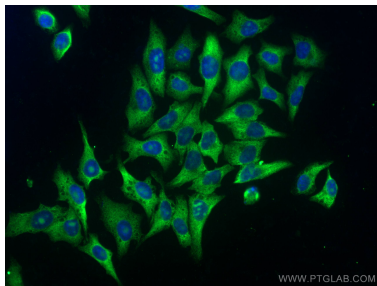
Immunohistochemical analysis of paraffin-embedded human urothelial carcinoma tissue slide using 67566-1-Ig (RPS14 antibody) at dilution of 1:1000 (under 40x lens). Heat mediated antigen retrieval with Tris-EDTA buffer (pH 9.0).



WB result of RPS14 antibody (67566-1-Ig: 1:2000; incubated at room temperature for 1.5 hours) with sh-Control and sh-RPS14 transfected HeLa cells.



Various lysates were subjected to SDS PAGE followed by western blot with 67566-1-Ig (RPS14 antibody) at dilution of 1:5000 incubated at room temperature for 1.5 hours.



Immunofluorescent analysis of (4% PFA) fixed HepG2 cells using RPS14 antibody (67566-1-Ig, Clone: 3D5H5 ) at dilution of 1:800 and CoraLite® 488-Conjugated AffiniPure Goat Anti-Mouse IgG(H+L).