

For Research Use Only

# CDK1 Monoclonal antibody

Catalog Number: 67575-1-Ig **13 Publications**



## Basic Information

<b>Catalog Number:</b> 67575-1-Ig	<b>GenBank Accession Number:</b> BC014563	<b>Purification Method:</b> Protein A purification
<b>Size:</b> 150ul , Concentration: 1919 µg/ml by Nanodrop and 1000 µg/ml by Bradford method using BSA as the standard;	<b>GeneID (NCBI):</b> 983	<b>CloneNo.:</b> 2A11E4
<b>Source:</b> Mouse	<b>UNIPROT ID:</b> P06493	<b>Recommended Dilutions:</b> WB 1:5000-1:50000
<b>Isotype:</b> IgG2a	<b>Full Name:</b> cell division cycle 2, G1 to S and G2 to M	
<b>Immunogen Catalog Number:</b> AG29018	<b>Calculated MW:</b> 25 kDa	
	<b>Observed MW:</b> 34 kDa	

## Applications

<b>Tested Applications:</b> FC, WB, ELISA	<b>Positive Controls:</b> WB : HEK-293 cells, A549 cells, HeLa cells, Jurkat cells, K-562 cells, HSC-T6 cells, NIH/3T3 cells
<b>Cited Applications:</b> WB, IHC, CoIP	
<b>Species Specificity:</b> Human, Mouse, Rat	
<b>Cited Species:</b> human, mouse	

## Background Information

CDK1, also named as CDC2, belongs to the protein kinase superfamily, CMGC Ser/Thr protein kinase family and CDC2/CDKX subfamily. CDK1 plays a key role in the control of the eukaryotic cell cycle. It is required in higher cells for entry into S-phase and mitosis. CDK1 is a catalytic subunit of the highly conserved protein kinase complex known as M-phase promoting factor (MPF), which is essential for G1/S and G2/M phase transitions of eukaryotic cell cycle. It is a component of the kinase complex that phosphorylates the repetitive C-terminus of RNA polymerase II. Mitotic cyclins stably associate with CDK1 and function as regulatory subunits. CDK1 has 2 isoforms produced by alternative splicing with the molecular mass of 34 kDa and 27 kDa.

## Notable Publications

Author	Pubmed ID	Journal	Application
Silu Hou	36427601	Food Chem Toxicol	WB
Chao Wu	34809653	Chin Med	WB
Ya Li	34003522	Mol Carcinog	WB

## Storage

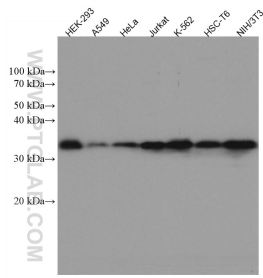
**Storage:**  
Store at -20°C.  
**Storage Buffer:**  
PBS with 0.02% sodium azide and 50% glycerol pH 7.3.  
Aliquoting is unnecessary for -20°C storage

\*\*\* 20ul sizes contain 0.1% BSA

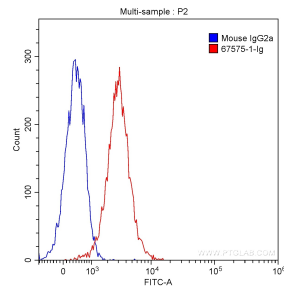
For technical support and original validation data for this product please contact:  
T: 1 (888) 4PTGLAB (1-888-478-4522) (toll free in USA), or 1(312) 455-8498 (outside USA)  
E: proteintech@ptglab.com  
W: ptglab.com

This product is exclusively available under Proteintech Group brand and is not available to purchase from any other manufacturer.

## Selected Validation Data



Various lysates were subjected to SDS PAGE followed by western blot with 67575-1-Ig (CDK1 antibody) at dilution of 1:10000 incubated at room temperature for 1.5 hours.



1X10<sup>6</sup> HeLa cells were intracellularly stained with 0.20 ug Anti-Human CDK1 (67575-1-Ig, Clone: 2A11E4) and CoraLite@488-Conjugated AffiniPure Goat Anti-Mouse IgG(H+L) with dilution 1:1000 (red), or stained with 0.20 ug Mouse IgG2a Isotype Control and CoraLite@488-Conjugated AffiniPure Goat Anti-Mouse IgG(H+L) with dilution 1:1000 (blue). Cells were fixed with 90% MeOH.