

For Research Use Only

ETV6 Monoclonal antibody

Catalog Number: 67579-1-Ig



Basic Information

Catalog Number: 67579-1-Ig	GenBank Accession Number: BC043399	Purification Method: Protein G purification
Size: 150ul , Concentration: 1000 µg/ml by Nanodrop and 556 µg/ml by Bradford method using BSA as the standard;	GeneID (NCBI): 2120	CloneNo.: 2A5A2
Source: Mouse	Full Name: ets variant 6	Recommended Dilutions: WB 1:1000-1:6000 IHC 1:50-1:500
Isotype: IgG1	Calculated MW: 452 aa, 53 kDa	
Immunogen Catalog Number: AG30054	Observed MW: 60 kDa	

Applications

Tested Applications: IHC, WB, ELISA	Positive Controls:
Species Specificity: Human	WB : Jurkat cells, U2OS cells, A431 cells, K-562 cells, THP-1 cells
Note-IHC: suggested antigen retrieval with TE buffer pH 9.0; (*) Alternatively, antigen retrieval may be performed with citrate buffer pH 6.0	IHC : human breast cancer tissue, human lung cancer tissue

Background Information

ETV6(ETS Variant Transcription Factor 6), also known as TEL, is a Protein Coding gene. ETV6 is a member of the ETS family of transcription factors encoded by the ETS variant 6 gene (ETV6), located on chromosome 12p13.2. ETV6 protein contains 3 domains: a) the pointed N-terminal (i.e. PNT) domain which forms oligomer partners with itself as well as other transcription factors (e.g. FLI1) and is required for ETV6's transcriptional repressing activity; b) the central regulatory domain; and c) the C-terminal DNA-binding domain(PMID: 22578774). ETV6 is highly expressed in early hematopoietic progenitor cells(HPCs) and is essential for hematopoiesis in the bone marrow(PMID: 31248877).

Storage

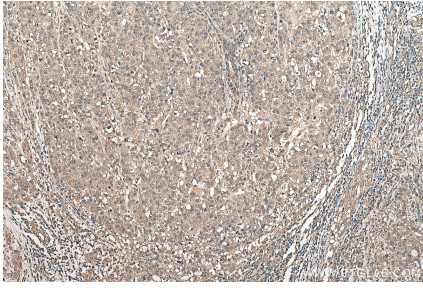
Storage:
Store at -20°C.
Storage Buffer:
PBS with 0.1% sodium azide and 50% glycerol pH 7.3.
Aliquoting is unnecessary for -20°C storage

*** 20ul sizes contain 0.1% BSA

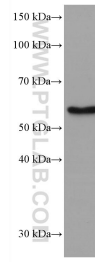
For technical support and original validation data for this product please contact:
T: 1 (888) 4PTGLAB (1-888-478-4522) (toll free in USA), or 1(312) 455-8498 (outside USA)
E: proteintech@ptglab.com
W: ptglab.com

This product is exclusively available under Proteintech Group brand and is not available to purchase from any other manufacturer.

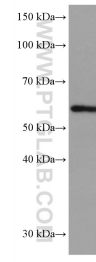
Selected Validation Data



Immunohistochemical analysis of paraffin-embedded human breast cancer tissue slide using 67579-1-Ig (ETV6 antibody) at dilution of 1:100 (under 10x lens). Heat mediated antigen retrieval with Tris-EDTA buffer (pH 9.0).



Jurkat cells were subjected to SDS PAGE followed by western blot with 67579-1-Ig (ETV6 antibody) at dilution of 1:3000 incubated at room temperature for 1.5 hours.



K-562 cells were subjected to SDS PAGE followed by western blot with 67579-1-Ig (ETV6 antibody) at dilution of 1:3000 incubated at room temperature for 1.5 hours.