

For Research Use Only

# Galectin 10 Monoclonal antibody

Catalog Number: 67581-1-Ig



## Basic Information

Catalog Number:

67581-1-Ig

Size:

150ul, Concentration: 1400 ug/ml by Nanodrop and 500 ug/ml by Bradford method using BSA as the standard;

Source:

Mouse

Isotype:

IgG1

Immunogen Catalog Number:

AG18569

GenBank Accession Number:

BC119711

GeneID (NCBI):

1178

UNIPROT ID:

Q05315

Full Name:

Charcot-Leyden crystal protein

Calculated MW:

142 aa, 16 kDa

Observed MW:

16 kDa

Purification Method:

Protein G purification

CloneNo.:

5D9B7

Recommended Dilutions:

WB 1:2000-1:6000

## Applications

Tested Applications:

WB, ELISA

Species Specificity:

Human

Positive Controls:

WB : HL-60 cells, Human peripheral blood leukocyte

## Storage

Storage:

Store at -20°C.

Storage Buffer:

PBS with 0.02% sodium azide and 50% glycerol pH 7.3.

Aliquoting is unnecessary for -20°C storage

\*\*\* 20ul sizes contain 0.1% BSA

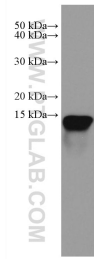
For technical support and original validation data for this product please contact:

T: 1 (888) 4PTGLAB (1-888-478-4522) (toll free in USA), or 1(312) 455-8498 (outside USA)

E: [proteintech@ptglab.com](mailto:proteintech@ptglab.com)  
W: [ptglab.com](http://ptglab.com)

This product is exclusively available under Proteintech Group brand and is not available to purchase from any other manufacturer.

## Selected Validation Data



HL-60 cells were subjected to SDS PAGE followed by western blot with 67581-1-Ig (CLC antibody) at dilution of 1:5000 incubated at room temperature for 1.5 hours.