

For Research Use Only

HINT1 Monoclonal antibody

Catalog Number: 67583-1-Ig **1 Publications**



Basic Information

Catalog Number: 67583-1-Ig	GenBank Accession Number: BC007090	Purification Method: Protein A purification
Size: 150ul , Concentration: 2500 ug/ml by Nanodrop and 1500 ug/ml by Bradford method using BSA as the standard;	GeneID (NCBI): 3094	CloneNo.: 1G3E4
Source: Mouse	UNIPROT ID: P49773	Recommended Dilutions: WB 1:500-1:2000 IHC 1:50-1:500 IF/ICC 1:200-1:800
Isotype: IgG2a	Full Name: histidine triad nucleotide binding protein 1	
Immunogen Catalog Number: AG16662	Calculated MW: 14 kDa	
	Observed MW: 14 kDa	

Applications

Tested Applications: WB, IHC, IF/ICC, ELISA	Positive Controls: WB : LNCaP cells, HeLa cells, HepG2 cells, Jurkat cells, K-562 cells IHC : human breast cancer tissue, IF/ICC : HeLa cells,
Cited Applications: WB	
Species Specificity: Human	
Cited Species: mouse	
Note-IHC: suggested antigen retrieval with TE buffer pH 9.0; (*) Alternatively, antigen retrieval may be performed with citrate buffer pH 6.0	

Background Information

HINT1(Histidine triad nucleotide-binding protein 1) is also named as HINT, PKCI1, PRKCNH1, which is a member of the histidine triad (HIT) family, highly conserved in diverse species and ubiquitously expressed in mammalian tissues. It hydrolyzes adenosine 5'-monophosphoramidate substrates such as AMP-morpholidate, AMP-N-alanine methyl ester, AMP-alpha-acetyl lysine methyl ester and AMP-NH2.

Notable Publications

Author	Pubmed ID	Journal	Application
Na Dong	38485947	Cell Death Dis	WB

Storage

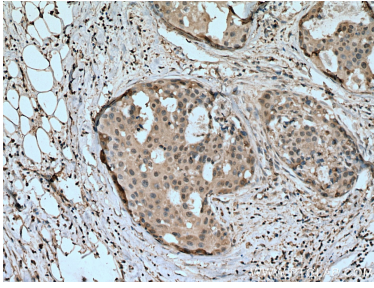
Storage:
Store at -20°C.
Storage Buffer:
PBS with 0.02% sodium azide and 50% glycerol pH 7.3.
Aliquoting is unnecessary for -20°C storage

*** 20ul sizes contain 0.1% BSA

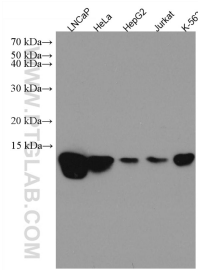
For technical support and original validation data for this product please contact:
T: 1 (888) 4PTGLAB (1-888-478-4522) (toll free in USA), or 1(312) 455-8498 (outside USA)
E: proteintech@ptglab.com
W: ptglab.com

This product is exclusively available under Proteintech Group brand and is not available to purchase from any other manufacturer.

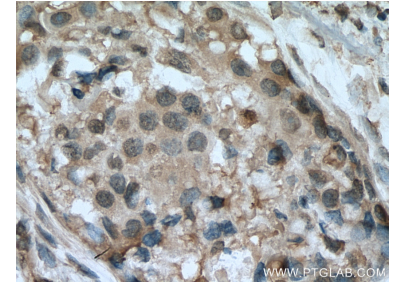
Selected Validation Data



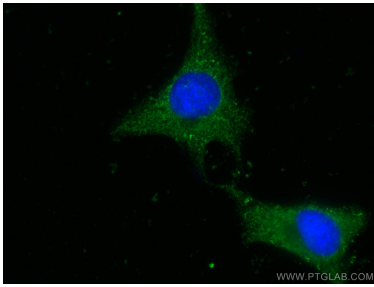
Immunohistochemical analysis of paraffin-embedded human breast cancer tissue slide using 67583-1-Ig (HINT1 antibody) at dilution of 1:200 (under 10x lens). Heat mediated antigen retrieval with Tris-EDTA buffer (pH 9.0).



Various lysates were subjected to SDS PAGE followed by western blot with 67583-1-Ig (HINT1 antibody) at dilution of 1:2000 incubated at room temperature for 1.5 hours.



Immunohistochemical analysis of paraffin-embedded human breast cancer tissue slide using 67583-1-Ig (HINT1 antibody) at dilution of 1:200 (under 40x lens). Heat mediated antigen retrieval with Tris-EDTA buffer (pH 9.0).



Immunofluorescent analysis of (-20°C Ethanol) fixed HeLa cells using HINT1 antibody (67583-1-Ig, Clone: 1G3E4) at dilution of 1:400 and CoraLite®488-Conjugated Goat Anti-Mouse IgG(H+L).