

For Research Use Only

# Calumenin Monoclonal antibody

Catalog Number: 67585-1-Ig



## Basic Information

Catalog Number: 67585-1-Ig	GenBank Accession Number: BC013383	Purification Method: Protein A purification
Size: 150ul , Concentration: 5914 ug/ml by 813 Nanodrop and 1000 ug/ml by Bradford method using BSA as the standard;	GeneID (NCBI): 813	CloneNo.: 2D8B8
Source: Mouse	UNIPROT ID: O43852	Recommended Dilutions: WB 1:1000-1:4000 IHC 1:250-1:1000 IF/ICC 1:50-1:500
Isotype: IgG1	Full Name: calumenin	
Immunogen Catalog Number: AG12073	Calculated MW: 315 aa, 37 kDa	
	Observed MW: 47-50 kDa	

## Applications

Tested Applications:  
WB, IHC, IF/ICC, ELISA

Species Specificity:  
Human, mouse, rat

**Note-IHC: suggested antigen retrieval with  
TE buffer pH 9.0; (\*) Alternatively, antigen  
retrieval may be performed with citrate  
buffer pH 6.0**

Positive Controls:

WB : HeLa cells, NIH/3T3 cells, HepG2 cells, HSC-T6  
cells, Jurkat cells, RAW264.7 cells, HEK-293 cells

IHC : human colon cancer tissue, human cervical  
cancer tissue, human kidney tissue, mouse placenta  
tissue

IF/ICC : HeLa cells,

## Storage

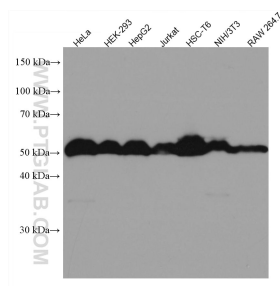
Storage:  
Store at -20°C. Stable for one year after shipment.  
Storage Buffer:  
PBS with 0.02% sodium azide and 50% glycerol pH 7.3.  
Aliquoting is unnecessary for -20°C storage

\*\*\* 20ul sizes contain 0.1% BSA

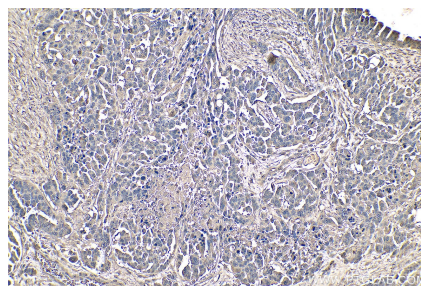
For technical support and original validation data for this product please contact:  
T: 1 (888) 4PTGLAB (1-888-478-4522) (toll free in USA), or 1(312) 455-8498 (outside USA)  
E: [proteintech@ptglab.com](mailto:proteintech@ptglab.com)  
W: [ptglab.com](http://ptglab.com)

This product is exclusively available under Proteintech Group brand and is not available to purchase from any other manufacturer.

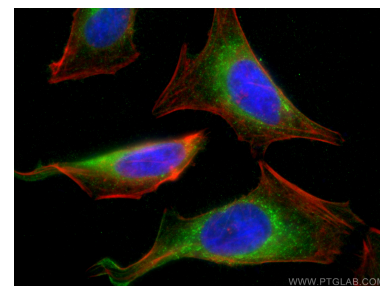
## Selected Validation Data



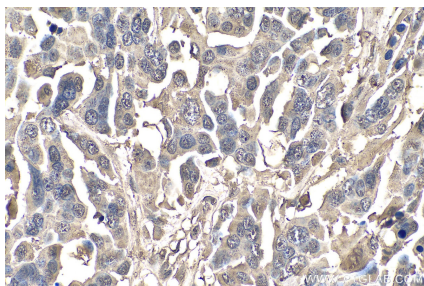
Various lysates were subjected to SDS PAGE followed by western blot with 67585-1-Ig (CALU antibody) at dilution of 1:2000 incubated at room temperature for 1.5 hours.



Immunohistochemical analysis of paraffin-embedded human colon cancer tissue slide using 67585-1-Ig (Calumenin antibody) at dilution of 1:500 (under 10x lens). Heat mediated antigen retrieval with Tris-EDTA buffer (pH 9.0).



Immunofluorescent analysis of (4% PFA) fixed HeLa cells using Calumenin antibody (67585-1-Ig, Clone: 2D8B8) at dilution of 1:200 and CoraLite®488-Conjugated AffiniPure Goat Anti-Mouse IgG(H+L), CL594-Phalloidin (red).



Immunohistochemical analysis of paraffin-embedded human colon cancer tissue slide using 67585-1-Ig (Calumenin antibody) at dilution of 1:500 (under 40x lens). Heat mediated antigen retrieval with Tris-EDTA buffer (pH 9.0).