

For Research Use Only

UBAP2L Monoclonal antibody, PBS Only

Catalog Number: 67588-1-PBS



Basic Information

Catalog Number:

67588-1-PBS

Size:

100ug , Concentration: 1mg/ml by Nanodrop;

Source:

Mouse

Isotype:

IgG2b

Immunogen Catalog Number:

AG30125

GenBank Accession Number:

BC003170

GeneID (NCBI):

9898

UNIPROT ID:

Q14157

Full Name:

ubiquitin associated protein 2-like

Calculated MW:

115 kDa

Observed MW:

140-160 kDa

Purification Method:

Protein A purification

CloneNo.:

1E3D1

Applications

Tested Applications:

WB, Indirect ELISA

Species Specificity:

human

Background Information

Ubiquitin-associated protein 2-like (UBAP2L) is a highly conserved protein with an N-terminal ubiquitin-associated (UBA) domain involved in the ubiquitin-proteasome system and aggregate formation induced by proteasome inhibitors. It was originally identified as a human sperm protein that interacts with zona pellucida 3 in human eggs. It can interact with BIM1 to form a complex that modulates hematopoietic stem cell activity. Recent studies have confirmed that UBAP2L function as an oncogene and is associated with various types of cancer, including prostate cancer, glioma, hepatocellular carcinoma (HCC), and colorectal carcinoma. (PMID: 31114027, PMID: 29196913)

Storage

Storage:

Store at -80°C.

Storage Buffer:

PBS Only

For technical support and original validation data for this product please contact:

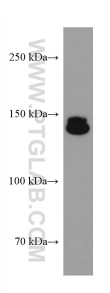
T: 1 (888) 4PTGLAB (1-888-478-4522) (toll free in USA), or 1(312) 455-8498 (outside USA)

E: proteintech@ptglab.com

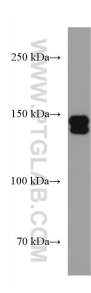
W: ptglab.com

This product is exclusively available under Proteintech Group brand and is not available to purchase from any other manufacturer.

Selected Validation Data



K-562 cells were subjected to SDS PAGE followed by western blot with 67588-1-Ig (UBAP2L antibody) at dilution of 1:3000 incubated at room temperature for 1.5 hours. This data was developed using the same antibody clone with 67588-1-PBS in a different storage buffer formulation.



HEK-293 cells were subjected to SDS PAGE followed by western blot with 67588-1-Ig (UBAP2L antibody) at dilution of 1:3000 incubated at room temperature for 1.5 hours. This data was developed using the same antibody clone with 67588-1-PBS in a different storage buffer formulation.