

For Research Use Only

# Mitoferrin 1 Monoclonal antibody

Catalog Number: 67593-1-Ig



## Basic Information

<b>Catalog Number:</b> 67593-1-Ig	<b>GenBank Accession Number:</b> BC132799	<b>Purification Method:</b> Protein G purification
<b>Size:</b> 150ul , Concentration: 2000 µg/ml by Nanodrop and 1000 µg/ml by Bradford method using BSA as the standard;	<b>GeneID (NCBI):</b> 51312	<b>CloneNo.:</b> 1B1B2
<b>Source:</b> Mouse	<b>Full Name:</b> solute carrier family 25, member 37	<b>Recommended Dilutions:</b> WB 1:1000-1:6000
<b>Isotype:</b> IgG1	<b>Observed MW:</b> 40 kDa	
<b>Immunogen Catalog Number:</b> AG26216		

## Applications

**Tested Applications:**  
WB, ELISA

**Species Specificity:**  
Human

### Positive Controls:

**WB :** human placenta tissue, HepG2 cells, human spleen tissue, K-562 cells, L02 cells, LNCaP cells, TF-1 cells

## Background Information

### Storage

**Storage:**  
Store at -20°C.

**Storage Buffer:**  
PBS with 0.02% sodium azide and 50% glycerol pH 7.3.

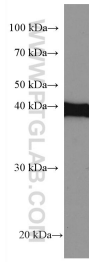
Aliquoting is unnecessary for -20°C storage

\*\*\* 20ul sizes contain 0.1% BSA

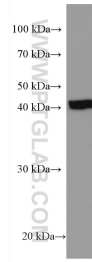
For technical support and original validation data for this product please contact:  
T: 1 (888) 4PTGLAB (1-888-478-4522) (toll free in USA), or 1(312) 455-8498 (outside USA) E: proteintech@ptglab.com W: ptglab.com

This product is exclusively available under Proteintech Group brand and is not available to purchase from any other manufacturer.

## Selected Validation Data



TF-1 cells were subjected to SDS PAGE followed by western blot with 67593-1-Ig (Mitoferrin 1 antibody) at dilution of 1:3000 incubated at room temperature for 1.5 hours.



human placenta tissue were subjected to SDS PAGE followed by western blot with 67593-1-Ig (Mitoferrin 1 antibody) at dilution of 1:3000 incubated at room temperature for 1.5 hours.